

Data supplement

- under -2.4
- -2.4 to < -2.3
- -2.3 to < -2.2
- -2.2 to < -2.1
- -2.1 to < -2
- -2 to < -1.9
- -1.9 to < -1.8
- over -1.8

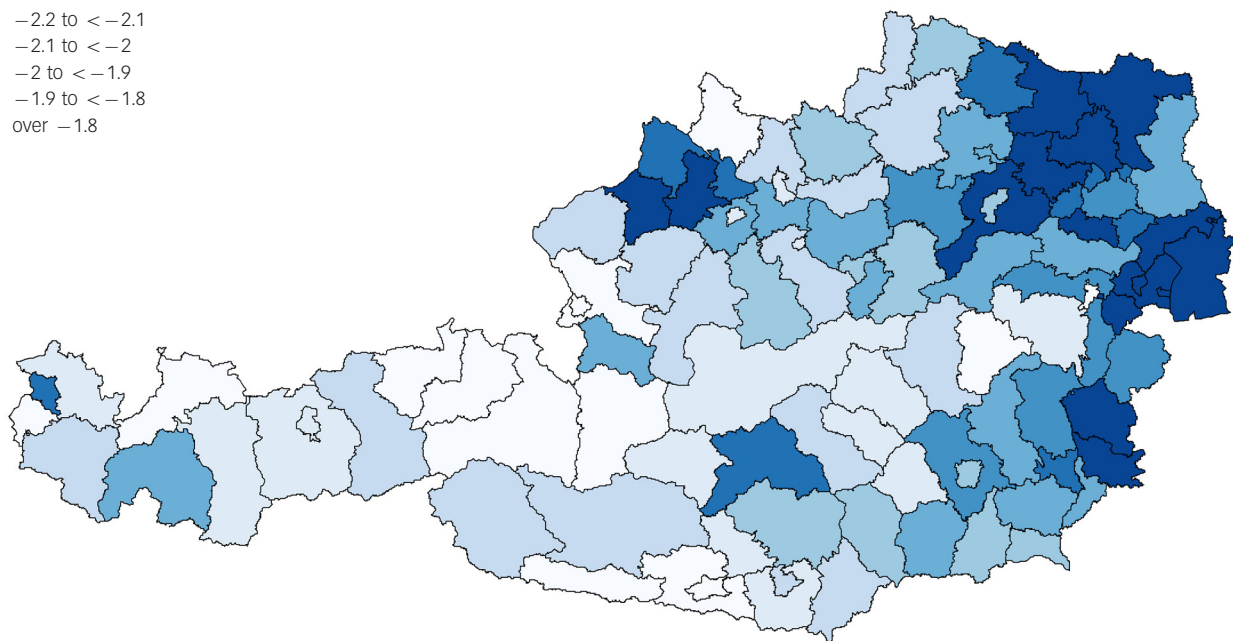


Fig. DS1 Logarithmised lithium levels in drinking water across 99 Austrian districts (2005–2010).

- under 0.4
- 0.4 to < 0.5
- 0.5 to < 0.6
- 0.6 to < 0.7
- 0.7 to < 0.8
- 0.8 to < 0.9
- 0.9 to < 1
- over 1

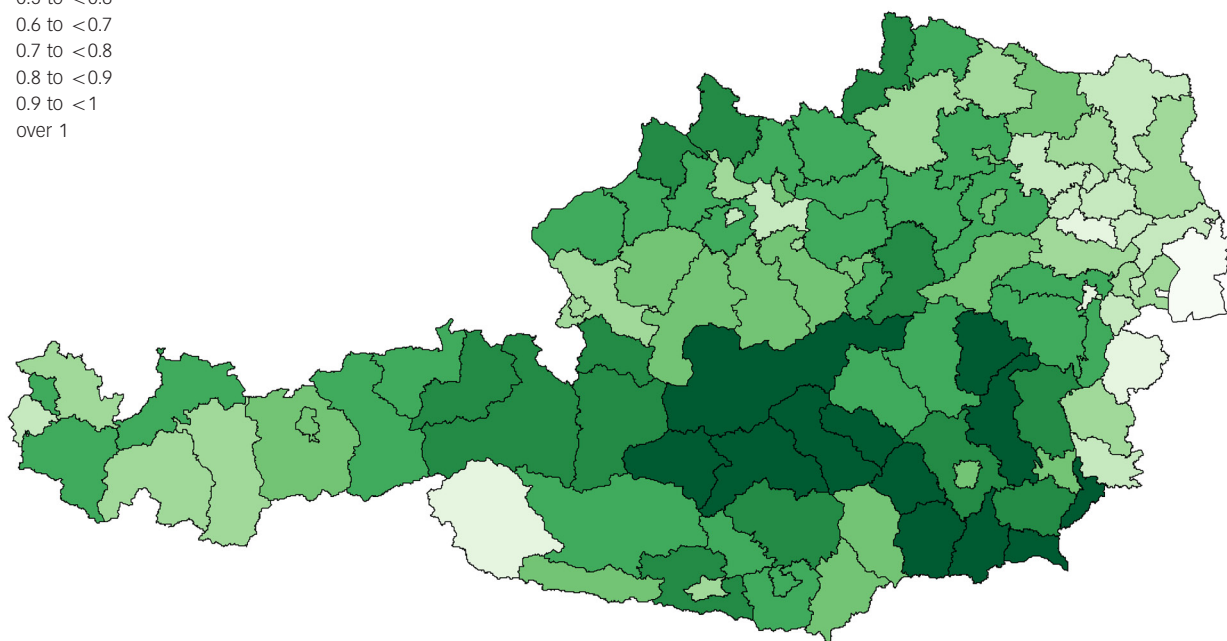


Fig. DS2 Standardised suicide mortality ratios across Austrian districts (2005–2009).

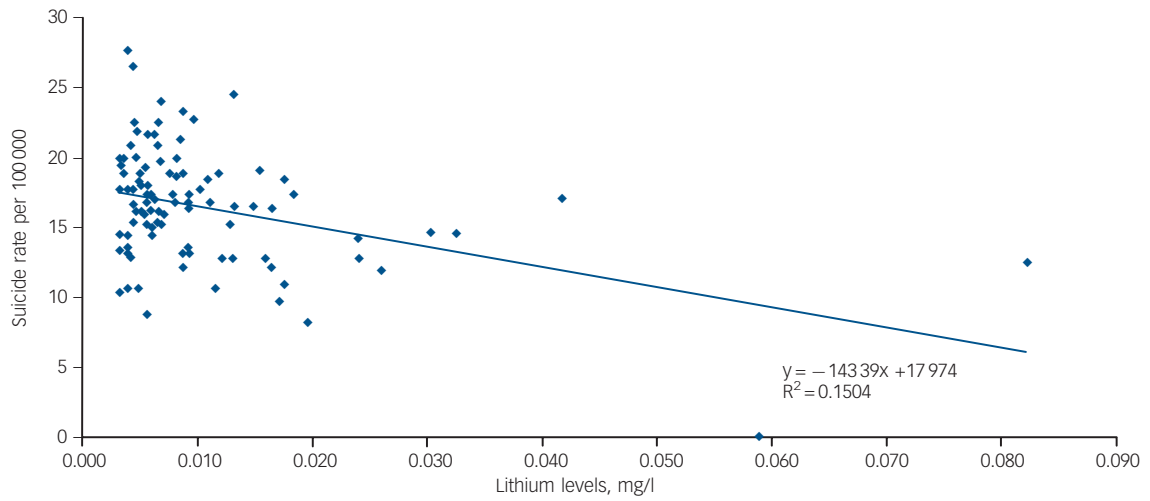


Fig. DS3 Crude lithium levels and suicide rates (2005–2009).

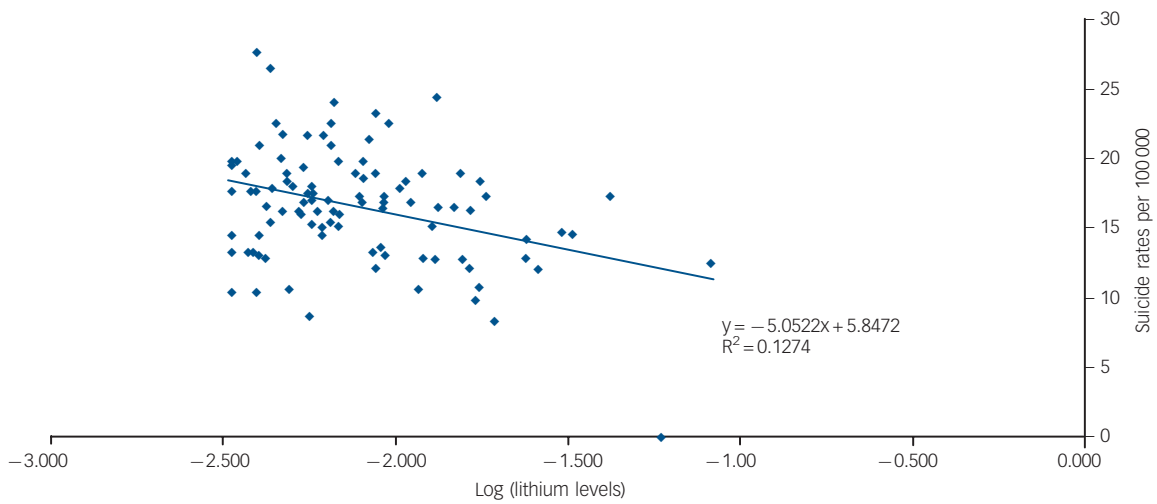


Fig. DS4 Log-transformed lithium levels and suicide rates (2005–2009).