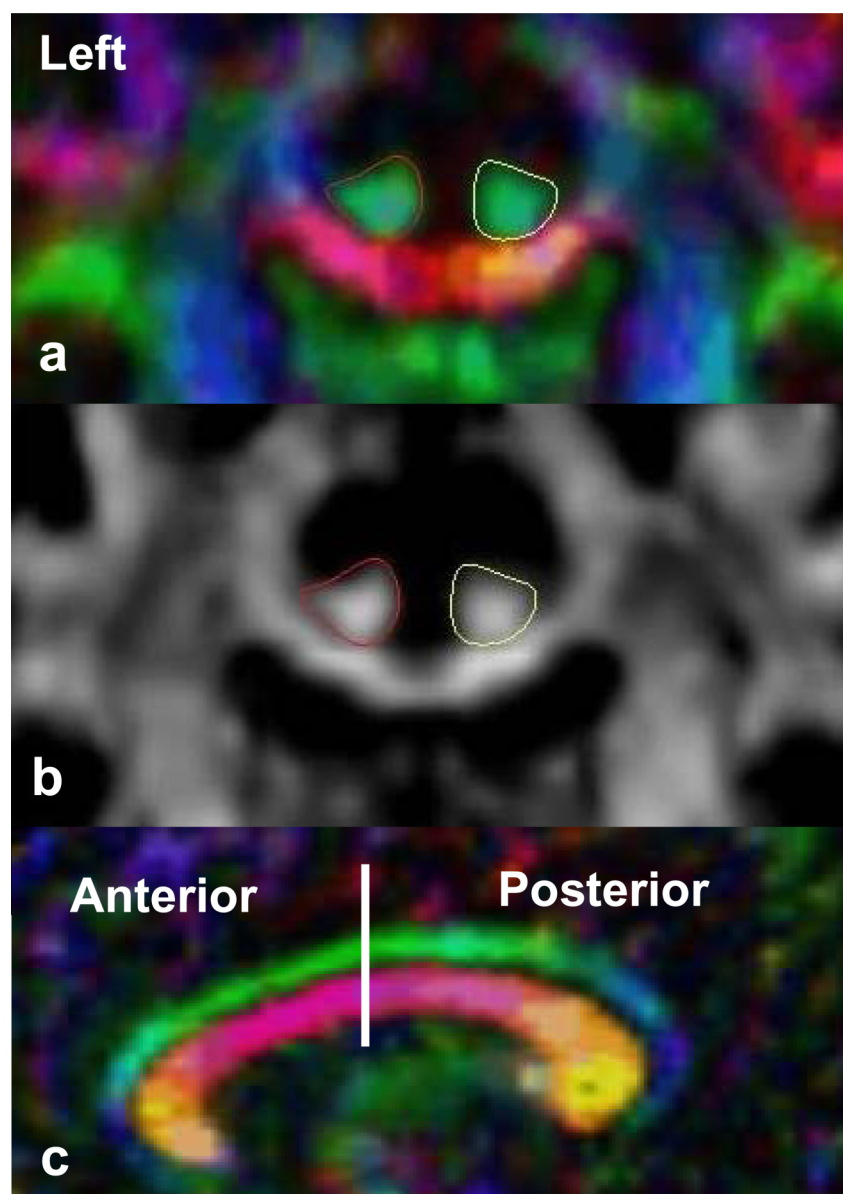


## Data supplement

**Fig. DS1** Delineations of the cingulum.

Coronal (a) and sagittal (c) images from the tensor colour map displays the anterior–posterior coursing fibres of the cingulum in green. A coronal image (b) from the fractional anisotropy map displays the voxels with fractional anisotropy values of more than 0.2. The red and yellow lines in images (a) and (b) show the delineation of the cingulum. The vertical white line in image (c) shows the division between the anterior and posterior cingulum subregions defined by the plane perpendicular to the midpoint of the anterior commissure–posterior commissure line.