

Fig. DS1 Male fluorescence *in situ* hybridisation with whole chromosome paint X and demonstrates extra material derived from X.

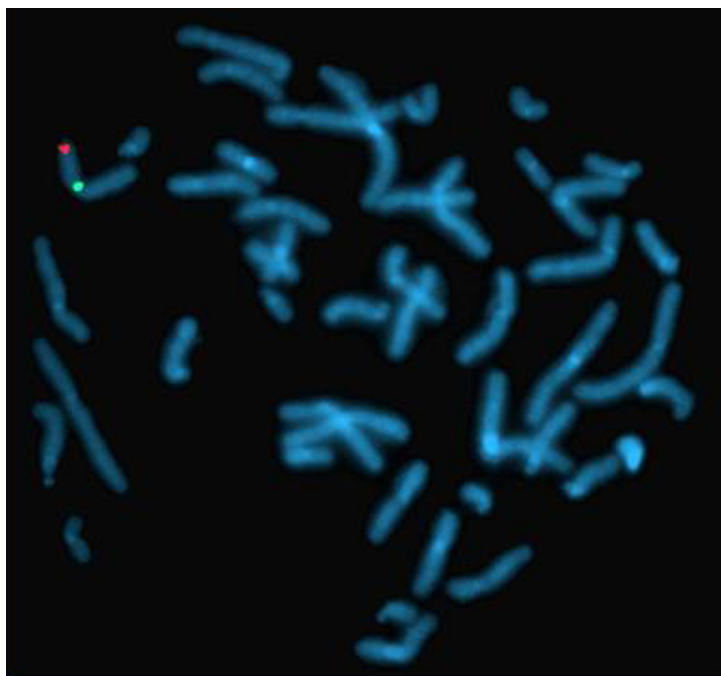


Fig. DS2 Metaphase of male fluorescence *in situ* hybridisation for Kallman probe (not duplicated); DXZI, X centromere probe.

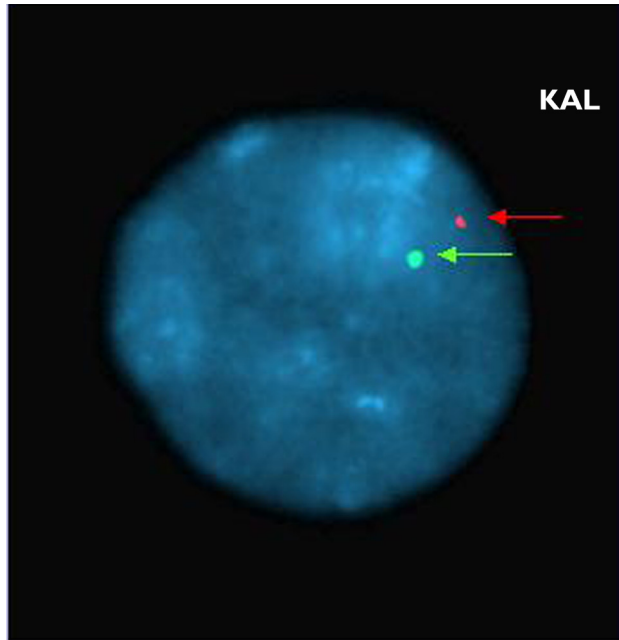


Fig. DS3 Interphase male fluorescence *in situ* hybridisation for Kallman probe (not duplicated); DXZI, X centromere probe.

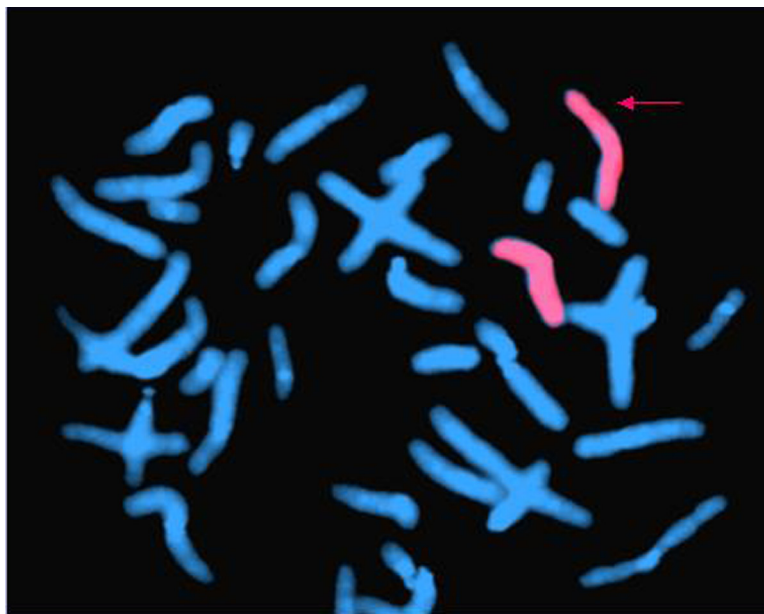


Fig. DS4 Female fluorescence *in situ* hybridisation with whole-chromosome paint X and demonstrates extra material derived from X.