

Online Supplementary Appendix to “Niche Party Success and Mainstream Party Policy Shifts – How Green and Radical Right Parties Differ in Their Impact”

Table A1 – Radical Right and Green Parties

Country	Radical Right Party	Green Party
Austria	Alliance for the Future of Austria Freedom Party (after 1986)	The Greens (Die Grünen)
Belgium	Front National Vlaams Blok/Belang	Agalev – Groen Ecolo
Denmark	Danish People’s Party Progress Party	Greens (De Gronne)
Finland	True Finns	Green League
France	Front National	Greens (Les Verts)
Germany	Deutsche Volkunion Die Republikaner Nationaldemokratische Partei Deutschlands	Greens (Bündins 90 – Die Grünen)
Great Britain		Green Party
Ireland		Green Party
Italy	Alleanza Nazionale Lega Nord Movimento Sociale–Fiamma Tricolore	Green Federation (Federazione dei Verdi)
Luxembourg		The Greens (Déi Gréng)
Netherlands	Center Democrats List Pim Fortuyn Party for Freedom	Greens (De Groenen) GreenLeft (GroenLinks)
Norway	Progress Party	
Portugal		Greens (Os Verdes)
Spain		Initiative for Catalonia Greens (Iniciativa per Catalunya Verds)
Sweden	New Democracy Sweden Democrats	Greens (Miljöpartiet)
Switzerland	Freiheits-Partei der Schweiz Nationale Aktion für Volk und Heimat Schweizer Demokraten Schweizerische Volkspartei	Greens (Grüne – Écologiste)

Table A2– Summary Statistics

	Mean	Sd	Min	Max	N
Multiculturalism Position	-0.46	0.72	-1.00	1.00	313
Multiculturalism Saliency	1.12	2.21	0.00	16.99	525
Environment Position	0.38	0.58	-1.00	1.00	503
Environment Saliency	7.14	4.63	0.00	29.10	525
Radical Right Support (t-1)	5.16	6.74	0.00	26.91	501
Green Party Support (t-1)	2.46	2.88	0.00	11.60	501
Party Size	20.10	13.82	0.00	51.29	529
Government Party	0.50	0.50	0.00	1.00	501
Immigration (log)	3.87	1.17	0.99	6.85	380
GDP per Capita (log)	9.84	0.51	8.53	11.25	501
Chernobyl	0.15	0.36	0.00	1.00	529

Figure A1 – Party Fixed Effects

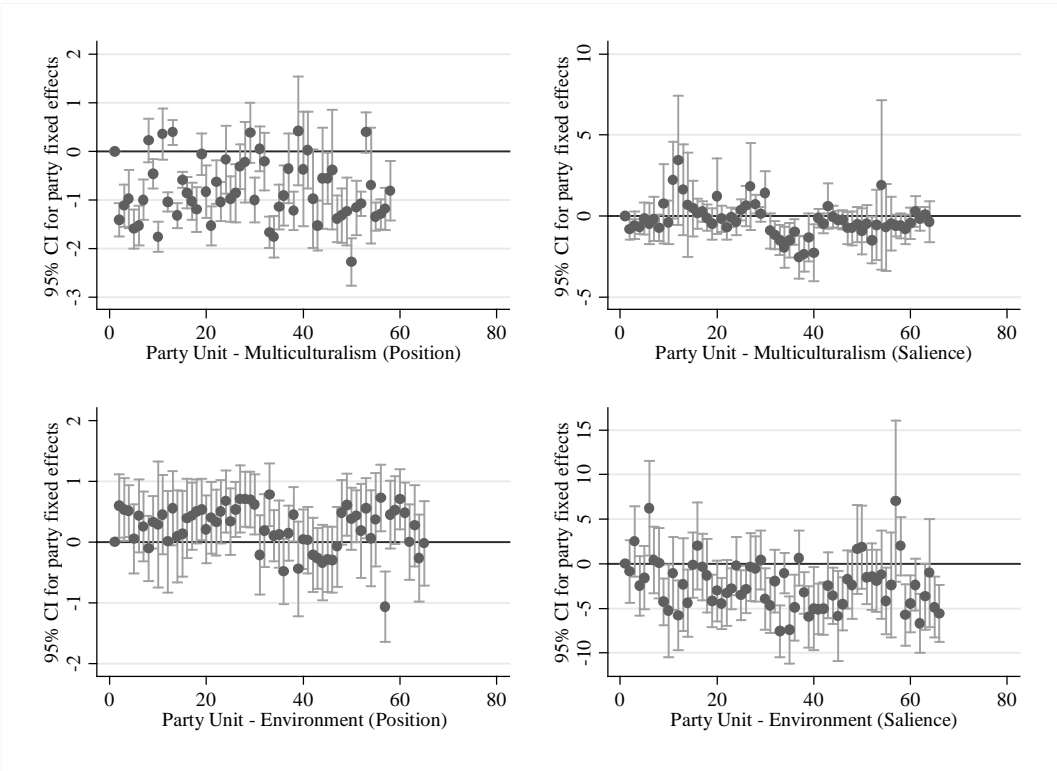


Table A3 – ADLDV2 Model

	(1)	(2)	(3)	(4)
	Multiculturalism Position	Multiculturalism Salience	Environment Position	Environment Salience
DV (t-1)	-0.140 (0.099)	0.403* (0.173)	0.013 (0.118)	0.129 (0.114)
DV (t-2)	0.047 (0.074)	-0.025 (0.183)	-0.161 (0.096)	-0.072 (0.101)
Radical Right / Green Support (t-1)	0.040** (0.010)	0.094** (0.032)	-0.018 (0.025)	-0.182 (0.223)
Radical Right / Green Support (t-2)	0.004 (0.011)	0.028 (0.039)	-0.027 (0.021)	-0.583* (0.228)
Controls and Party Fixed Effects				
Observations	140	326	340	366
R-squared	0.841	0.603	0.661	0.835

Panel corrected standard errors in parentheses

** p<0.01, * p<0.05

Table A4 – Operationalization Immigration - Alonso and da Fonseca (2011)

$$Immigration (Pos.) = \frac{per601 + per605 + per608 - per607 - per705}{per601 + per605 + per608 + per607 + per705}$$

$$Immigration (Sal.) = per601 + per605 + per608 + per607 + per705$$

	(1)	(2)
	Immigration Position	Immigration Salience
Lagged DV	-0.015 (0.099)	0.246* (0.112)
Radical Right Support (t-1)	0.015* (0.006)	0.260** (0.062)
Immigration (log)	-0.017 (0.026)	0.907** (0.308)
Party Size	-0.013** (0.004)	0.027 (0.055)
Government Party	-0.069 (0.049)	-0.086 (0.514)
Party Fixed Effects		
Observations	333	365
R-squared	0.619	0.840

Panel corrected standard errors in parentheses

** p<0.01, * p<0.05

Table A5 – Operationalization Environment

$$Environment (Pos.) = \frac{per501 + per416 - per410}{per501 + per416 + per410}$$

$$Environment (Sal.) = per501 + per416 + per410$$

	(1)	(2)	(3)
	Environmental Protection (per501)	Environment Position	Environment Salience
Lagged DV	0.196 (0.112)	0.046 (0.102)	0.190 (0.107)
Green Party Support (t-1)	-0.408* (0.160)	-0.028 (0.016)	-0.506** (0.159)
GDP per Capita (log)	0.807 (0.643)	0.270** (0.104)	1.996** (0.727)
Party Size	0.057* (0.028)	0.002 (0.005)	0.053 (0.033)
Government Party	0.738* (0.287)	0.060 (0.041)	0.787* (0.324)
Chernobyl	1.288* (0.599)	-0.005 (0.084)	1.919** (0.712)
Fixed Effects			
Observations	432	409	432
R-squared	0.778	0.694	0.853

Panel corrected standard errors in parentheses

** p<0.01, * p<0.05

Table A6 – Reverse Causality Regression

	(1)	(2)	(3)	(4)
	Radical Right Support	Radical Right Support	Green Party Support	Green Party Support
Radical Right / Green Party Support (t-1)	0.285 (0.175)	0.352* (0.158)	0.368** (0.124)	0.381** (0.124)
Multiculturalism Position (t-1)	0.140 (0.509)			
Multiculturalism Salience (t-1)		0.298** (0.108)		
Environment Position (t-1)			-0.273 (0.162)	
Environment Salience (t-1)				0.029 (0.015)
Controls and Party Fixed Effects				
Observations	182	307	355	369
R-squared	0.884	0.889	0.933	0.933

Panel corrected standard errors in parentheses

** p<0.01, * p<0.05

Table A7 - Interactions Radical Right Support

	(1)	(2)	(3)	(4)
	Multiculturalism Position	Multiculturalism Salience	Multiculturalism Position	Multiculturalism Salience
Lagged DV	0.008 (0.112)	0.410** (0.159)	0.039 (0.124)	0.404* (0.160)
Radical Right Support (t-1)	0.032** (0.007)	0.085** (0.032)	0.027** (0.009)	0.086* (0.034)
Immigration (log)	0.184** (0.024)	0.307* (0.120)	0.168** (0.030)	0.283* (0.119)
Party Size	-0.011 (0.010)	0.027 (0.019)	-0.010 (0.010)	0.024 (0.019)
Government Party	-0.214** (0.070)	-0.235 (0.247)	-0.226** (0.073)	-0.288 (0.250)
Left-Right Position	0.004 (0.004)	-0.010 (0.012)		
Radical Right Support X Left- Right Vote Difference (t-1)	0.001** (0.000)	0.002 (0.001)	0.004 (0.009)	0.009 (0.015)
Radical Right Support X Vote Loss			-0.001 (0.001)	-0.003 (0.002)
Party Fixed Effects				
Observations	202	365	199	357
R-squared	0.748	0.597	0.735	0.593

Panel corrected standard errors in parentheses

** p<0.01, * p<0.05

Table A8 - Interactions Green Party Support

	(1)	(2)	(3)	(4)
	Environment Position	Environment Salience	Environment Position	Environment Salience
Lagged DV	0.035 (0.100)	0.169 (0.104)	0.045 (0.103)	0.190 (0.108)
Green Party Support (t-1)	-0.029* (0.015)	-0.467** (0.153)	-0.030 (0.017)	-0.470** (0.165)
GDP per Capita (log)	0.152 (0.098)	0.720 (0.739)	0.197 (0.109)	1.049 (0.728)
Party Size	0.003 (0.006)	0.061 (0.034)	0.006 (0.006)	0.061 (0.035)
Government Party	0.057 (0.046)	0.742* (0.315)	0.089 (0.049)	0.609 (0.320)
Chernobyl	-0.074 (0.081)	1.636* (0.685)	-0.054 (0.083)	1.948** (0.703)
Left-Right Position	-0.008** (0.003)	-0.047* (0.019)		
Green Support X Left-Right Vote Difference (t-1)	-0.000 (0.001)	-0.004 (0.004)	-0.012* (0.005)	0.054 (0.041)
Green Support X Vote Difference			0.001 (0.001)	-0.004 (0.009)
Party Fixed Effects				
Observations	406	429	397	420
R-squared	0.641	0.839	0.623	0.832

Panel corrected standard errors in parentheses

** p<0.01, * p<0.05

Table A9 – Interaction Different Operationalization Left-Right Position

	(1)	(2)	(3)	(4)
	Multiculturalism Position	Multiculturalism Salience	Environment Position	Environment Salience
Lagged DV	0.004 (0.107)	0.410** (0.159)	0.036 (0.100)	0.170 (0.104)
Radical Right / Green Party Support (t-1)	0.032** (0.008)	0.087** (0.033)	-0.029 (0.015)	-0.486** (0.150)
Party Size	-0.012 (0.011)	0.026 (0.019)	0.003 (0.006)	0.058 (0.034)
Government Party	-0.214** (0.069)	-0.255 (0.246)	0.056 (0.047)	0.725* (0.314)
Immigration (log)	0.188** (0.022)	0.297* (0.117)		
GDP per Capita (log)			0.152 (0.098)	0.722 (0.735)
Chernobyl			-0.072 (0.081)	1.623* (0.684)
Left-Right Position	0.271 (0.148)	-0.038 (0.459)	-0.306** (0.094)	-1.880** (0.615)
Left-Right Position X Radical Right / Green Party Support (t-1)	0.015* (0.007)	0.036 (0.027)	0.004 (0.011)	-0.121 (0.087)
Party Fixed Effects				
Observations	204	368	409	432
R-squared	0.747	0.593	0.641	0.840

Panel corrected standard errors in parentheses

** p<0.01, * p<0.05

Figure A2 – Marginal Effects Plot Different Operationalization Left-Right Position

