

Appendix 1. List of macroinvertebrate taxa recorded from the three habitats in Lake Taihu. For each taxon, the mean abundance (Abun. ind.m⁻²) and biomass (Bio. g.m⁻²) in the three habitats were calculated. *When calculating abundance and biomass, large unionids (*Anodonta woodiana woodiana* and *Lamprotula leai*) and the highly mobile invertebrate (*Palaemon modestus*) were excluded. +: Present.

Taxa	North Bays		Open Lake		East Bays	
	Abun.	Bio.	Abun.	Bio.	Abun.	Bio.
Oligochaeta						
Naididae						
<i>Branchiodrilus hortensis</i> (Stephenson)						
<i>Nais</i> sp.	3	0.0078	4	0.0017		
Tubificidae						
<i>Aulodrilus</i> sp.	14	0.0042			3.125	0.0014
<i>Branchiura sowerbyi</i> Beddard	52	0.9281	1	0.0048	18	0.3279
<i>Limnodrilus grandisetosus</i> Nomura	3	0.0043				
<i>Limnodrilus hoffmeisteri</i> Claperède	1368	3.1910	20	0.0154	34	0.0694
<i>Limnodrilus</i> sp.	6	0.0065	1	0.0008		
<i>Rhyacodrilus sinicus</i> (Chen)	125	0.1546	4	0.0321		
<i>Teneridrilus mastix</i> Brinkhurst	2	0.0022				
Bivalvia						
<i>Anodonta woodiana woodiana</i> (Lea)*	+					
<i>Corbicula fluminea</i> (Müller)	107	50.354	330	243.11	25	35.951
<i>Lamprotula leai</i> (Gray)*	+					
<i>Limnoperna lacustris</i> (Martena)			3	0.2897	1	0.0191
<i>Sphaerium lacustre</i> (Müller)	48	0.7611				
Gastropoda						
<i>Alocinma longicornis</i> (Benson)					34	3.9721
<i>Bellamyia aeruginosa</i> (Reeve)	33	41.227	6	6.6170	100	150.89
<i>Gyraulus convexiusculus</i> (Hütton)			1	0.0205	7	0.1091
<i>Parafossarulus striatulus</i> (Benson)					10	1.5258
<i>Radix swinhoei</i> (H. Adams)					6	0.6063
<i>Semisulcospira cancellata</i> (Benson)	7	0.6934			20	7.4746
<i>Stenothyra glabra</i> (A. Adams)	4	0.3333	4	0.0448	7	0.1078
Chironomidae						
<i>Chironomus semireductus</i> (Lenz)	127	1.2007				
<i>Cricotopus bicinctus</i> (Meigen)					1	0.0011
<i>Cryptochironomus digitatus</i> (Malloch)					1	0.0034
<i>Glyptotendipes lobiferus</i> (Say)	2	0.0062	2	0.0015		
<i>Microchironomus tener</i> (Kieffer)	3	0.0005				
<i>Microchironomus</i> sp.	30	0.0131				
<i>Polypedilum</i> sp.	1	0.0005			1	0.0002
<i>Procladius choreus</i> (Meigen)	2	0.0100				
<i>Prosilocerus akamusi</i> (Tokunaga)	4	0.0114				
<i>Tanytus chinensis</i> Wang	113	0.6565	2	0.0085		
Miscellaneous others						
Amphipoda sp.	5	0.0810	36	0.2860		
Gammarus sp.	464	1.8174	139	0.3325		
<i>Nephtys oligobranchia</i> Southern	3	0.0081	26	0.1899		
<i>Palaemon modestus</i> Heller*					+	
Polychatea sp.	5	0.0162	252	1.1808	8	0.0366

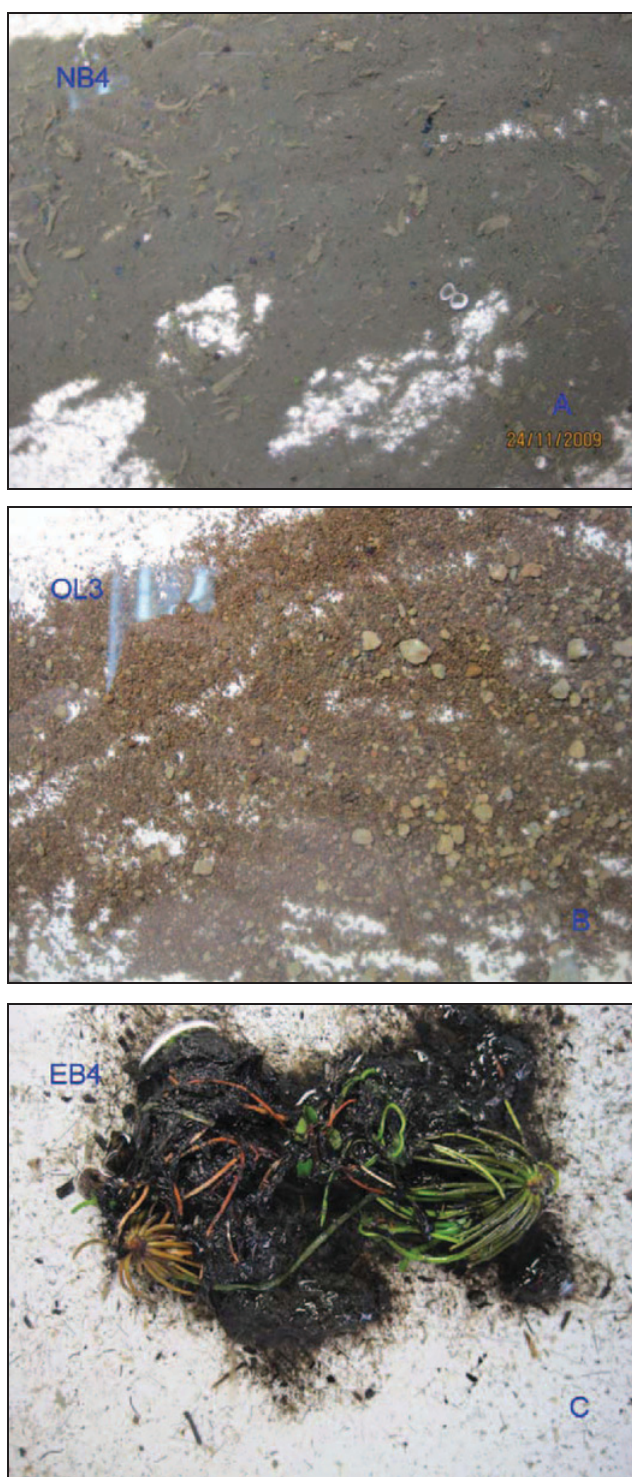


Fig. S1. Photographs of materials retained in 250 µm mesh sieve of three representative sampling stations for the three habitats. A: NB4; B: OL3; C: EB4. These photographs were captured in November 2009.