

**Supplementary Material:** To comply with APSR's page limit, we present only an abbreviated version of our full Appendix. The full Appendix can be found on APSR's Dataverse.

## Contents

### A1 Coding Corrections to GWF Regime Type, Elections, and Failed Coups

Table A1-A5 Geddes, Wright and Frantz (GWF) Autocratic Sample

Table A14-A15 GWF Balanced Sample

Table A16 Surviving Leadership Sample

Table A17-A20 Pooled Logit Models with Different Controls

Table A27-A29 Pooled Logit Models with Different Sample Specifications

Table A31-42 Pooled Logit Models with Senior Ministers and Coercive Positions

Figure A6-A8 Time Window Placebo Tests

Table A64 Senior Minister Exit Across Cold War, Cold War End and Post Cold War

## A1 Coding Corrections to GWF Regime Type, Elections, and Failed Coups

WhoGov’s collection of cabinet data at the beginning of July each year complicates the coding of regime type and the Election and Failed coup variables. Each of these variables cannot be merged on a country-year basis without errors. Below, we explain the coding corrections made for regime type, elections, and failed coups.

We use Geddes, Wright, and Frantz’s (2014) (hereafter, GWF) data to identify our sample of autocracies in sub-Saharan Africa. However, the country-year coding procedure for regimes used by GWF is not perfectly compatible with the cabinet observations each July from WhoGov. When merging these datasets by country-year, errors sometimes occur in years where one regime exits and another begins. This is because the country-year version of GWF records regimes as beginning on January 1 after the actual regime change date. For example, a regime that begins on August 1, 2000 would not show up in the GWF country-year data until 2001. In that example, a country-year merge with WhoGov would be correct. However, if the true regime start date was March 1, 2000, the country-year merge would fail in 2000. The WhoGov cabinet observed in July 2000 would be merged with the GWF regime from 2000 which would have already exited power in July. Since GWF record the true start and end dates of regimes, we are able to correct these problematic cases, ensuring that the cabinet observations are matched up with the appropriate regime.

A similar issue occurs with the coding of elections and failed coups. We recode the timing of elections and failed coup attempts that occur in year  $t$  but prior to July as occurring in year  $t - 1$ . This coding reflects the assumption that cabinet reshuffles can only be attributed to elections and failed coup attempts if they take place directly following these events. Consider the following example:

Minister X is present in the cabinet in 2005, but not in 2006. Under our coding scheme, Minister X is coded as exiting the cabinet in 2005. Now, assume that Minister X’s country held an election in February of 2005. If Minister X was dismissed following the election in February of 2005, they would not have been recorded as a cabinet member in 2005 since the observation is taken at the beginning of July. As such, we code the election as taking place in 2004. This prevents the dismissal of Minister X in 2005 from being attributed to the election. If, however, the 2005 election had taken place in September of 2005, the election year would remain coded as 2005.

**Table A1:** Summary of Countries and Ministers across Sample Variations

Sample	Countries	Country-years	Ministers	Minister-years
GWF sub-Saharan (Main)	39	1408	8133	34215
GWF All	44	1616	9333	39791
LIED sub-Saharan	42	1619	9844	40051
LIED All	47	1862	11512	47113
VDem ROW sub-Saharan	44	1704	10580	41776
VDem ROW All	50	1978	12446	49588

**Table A2:** GWF Autocracy, sub-Saharan Sample Summary Statistics

Statistic	N	Mean	St. Dev.	Min	Pctl(25)	Pctl(75)	Max
Minister Exit	34,215	0.25	0.43	0	0	1	1
CWE 5-year	34,215	0.13	0.34	0	0	0	1
Minister Tenure	34,215	3.90	3.51	1	1	5	29
Senior Minister	34,215	0.22	0.42	0	0	0	1
High Prestige Portfolio	34,215	0.29	0.45	0	0	1	1
Leader Tenure	34,215	11.71	8.53	1	5	17	45
Leader Exit	34,215	0.08	0.27	0	0	0	1
Personalism	33,883	0.35	0.78	-1.32	0.0005	0.80	1.83
Election	34,215	0.20	0.40	0	0	0	1
Failed Coup	34,215	0.04	0.19	0	0	0	1
Ln(GDP per Capita)	33,710	7.48	0.67	5.82	7.04	7.74	9.82
Cabinet Size	33,483	6.49	9.54	0.00	0.00	18.70	24.94
Ln(Oil/Gas Rents)	32,920	19.82	1.24	13.66	19.09	20.69	22.79
Ln(Total Aid)	33,843	0.25	0.15	0.07	0.15	0.31	0.73
VDem Polyarchy	34,215	28.34	11.36	2	20	34	74
Left Truncated	34,215	0.07	0.26	0	0	0	1

**Table A3:** GWF Autocracy, sub-Saharan Sample Country-Years

country_name	start_year	end_year
Angola	1976	2010
Benin	1966	1969

Benin	1973	1989
Botswana	1967	2010
Burkina Faso	1966	2010
Burundi	1966	1992
Burundi	1996	2002
Cameroon	1966	2010
Central African Republic	1966	1993
Central African Republic	2003	2010
Chad	1966	1978
Chad	1982	2010
Congo - Brazzaville	1966	1990
Congo - Brazzaville	1998	2010
Congo - Kinshasa	1966	2010
Cote d'Ivoire	1966	2010
Ethiopia	1966	2010
Gabon	1966	2010
Gambia	1966	2010
Ghana	1966	1969
Ghana	1972	1979
Ghana	1982	2000
Guinea	1966	2009
Guinea-Bissau	1975	1998
Guinea-Bissau	2003	2003
Kenya	1966	2002
Lesotho	1970	1992
Liberia	1966	1990
Liberia	1998	2003
Madagascar	1966	1992
Madagascar	2009	2010
Malawi	1966	1982
Malawi	1984	1993
Mali	1966	1990
Mauritania	1966	2006
Mauritania	2009	2010
Mozambique	1975	2010
Namibia	1990	2010
Niger	1966	1991
Niger	1996	1999
Nigeria	1966	1979
Nigeria	1984	1998
Rwanda	1966	1972
Rwanda	1974	2010
Senegal	1966	1999
Sierra Leone	1967	1995
Somalia	1970	1990

Sudan	1969	1985
Sudan	1989	2010
Swaziland	1969	2010
Tanzania	1966	2010
Togo	1966	2010
Uganda	1966	1978
Uganda	1981	2010
Zambia	1967	1991
Zambia	1996	2010
Zimbabwe	1981	2010

---

---

**Table A4:** GWF Autocracy, All Africa Sample Summary Statistics

Statistic	N	Mean	St. Dev.	Min	Pctl(25)	Pctl(75)	Max
Minister Exit	39,791	0.25	0.43	0	0	0	1
CWE 5-year	39,791	0.13	0.34	0	0	0	1
Minister Tenure	39,791	3.91	3.49	1	1	5	29
Senior Minister	39,791	0.22	0.42	0	0	0	1
High Prestige Portfolio	39,759	0.29	0.45	0.00	0.00	1.00	1.00
Leader Tenure	39,791	11.66	8.51	1	5	17	45
Leader Exit	39,791	0.08	0.27	0	0	0	1
Personalism	39,459	0.30	0.81	-1.32	-0.19	0.76	1.83
Election	39,791	0.20	0.40	0	0	0	1
Failed Coup	39,791	0.04	0.19	0	0	0	1
Ln(GDP per Capita)	39,215	7.69	0.85	5.82	7.11	8.06	10.68
Cabinet Size	39,059	8.18	10.15	0.00	0.00	20.08	25.35
Ln(Oil/Gas Rents)	37,661	19.84	1.44	7.03	19.11	20.84	22.79
Ln(Total Aid)	39,419	0.24	0.14	0.07	0.15	0.30	0.73
VDem Polyarchy	39,791	28.47	10.94	2	21	34	74
Left Truncated	39,791	0.07	0.26	0	0	0	1

**Table A5:** GWF Autocracy, All Africa Sample Country-Years

country_name	start_year	end_year
Algeria	1966	2010
Angola	1976	2010
Benin	1966	1969
Benin	1973	1989
Botswana	1967	2010
Burkina Faso	1966	2010
Burundi	1966	1992
Burundi	1996	2002
Cameroon	1966	2010
Central African Republic	1966	1993
Central African Republic	2003	2010
Chad	1966	1978
Chad	1982	2010
Congo - Brazzaville	1966	1990
Congo - Brazzaville	1998	2010
Congo - Kinshasa	1966	2010
Cote d'Ivoire	1966	2010
Ethiopia	1966	2010
Gabon	1966	2010
Gambia	1966	2010

Ghana	1966	1969
Ghana	1972	1979
Ghana	1982	2000
Guinea	1966	2009
Guinea-Bissau	1975	1998
Guinea-Bissau	2003	2003
Kenya	1966	2002
Lesotho	1970	1992
Liberia	1966	1990
Liberia	1998	2003
Libya	1966	2010
Madagascar	1966	1992
Madagascar	2009	2010
Malawi	1966	1982
Malawi	1984	1993
Mali	1966	1990
Mauritania	1966	2006
Mauritania	2009	2010
Morocco	1966	2010
Mozambique	1975	2010
Namibia	1990	2010
Niger	1966	1991
Niger	1996	1999
Nigeria	1966	1979
Nigeria	1984	1998
Rwanda	1966	1972
Rwanda	1974	2010
Senegal	1966	1999
Sierra Leone	1967	1995
Somalia	1970	1990
South Africa	1966	1993
Sudan	1969	1985
Sudan	1989	2010
Swaziland	1969	2010
Tanzania	1966	2010
Togo	1966	2010
Tunisia	1966	2010
Uganda	1966	1978
Uganda	1981	2010
Zambia	1967	1991
Zambia	1996	2010
Zimbabwe	1981	2010

## A2.4 GWF Balanced Sample

The balanced sample selects countries with periods of time continuously defined as autocracies by Geddes, Wright, and Frantz (2014) up to the end of the Cold War and retains those countries in the sample until 2010, even if they transition to democracy. <sup>1</sup>

**Table A14:** GWF Autocracy, sub-Saharan Sample Keeping Democratizers

country_name	start_year	end_year
Angola	1976	2010
Benin	1973	2010
Botswana	1967	2010
Burkina Faso	1966	2010
Burundi	1966	2010
Cameroon	1966	2010
Central African Republic	1966	2010
Chad	1982	2010
Congo - Brazzaville	1966	2010
Congo - Kinshasa	1966	2010
Cote d'Ivoire	1966	2010
Ethiopia	1966	2010
Gabon	1966	2010
Gambia	1966	2010
Ghana	1982	2010
Guinea	1966	2010
Guinea-Bissau	1975	2010
Kenya	1966	2010
Lesotho	1970	2010
Liberia	1966	2010
Madagascar	1966	2010
Mali	1966	2010
Mauritania	1966	2010
Mozambique	1975	2010
Niger	1966	2010
Nigeria	1984	2010
Rwanda	1966	1972
Rwanda	1974	2010
Senegal	1966	2010
Sierra Leone	1967	2010

---

<sup>1</sup>WhoGov is missing cabinet data for Malawi in 1983 and Rwanda in 1973.



Swaziland	1969	2010
Tanzania	1966	2010
Togo	1966	2010
Uganda	1981	2010
Zambia	1967	2010
Zimbabwe	1981	2010

**Table A15:** GWF Autocracy, sub-Saharan Sample Keeping Democratizers Summary Statistics

Statistic	N	Mean	St. Dev.	Min	Max
Minister Exit	36,093	0.26	0.44	0	1
CWE 5-year	36,093	0.12	0.33	0	1
Minister Tenure	36,093	3.73	3.38	1	29
Senior Minister	36,093	0.20	0.40	0	1
High Prestige Portfolio	36,093	0.28	0.45	0	1
Leader Tenure	36,093	10.76	8.57	1	45
Leader Exit	36,093	0.09	0.28	0	1
Personalism	30,518	0.36	0.75	-1.32	1.83
Election	36,093	0.21	0.41	0	1
Failed Coup	36,093	0.04	0.19	0	1
Ln(GDP per Capita)	36,093	7.41	0.66	4.90	9.82
Cabinet Size	35,361	6.43	9.52	0.00	25.10
Ln(Oil/Gas Rents)	35,018	19.89	1.22	13.66	23.40
Ln(Total Aid)	35,721	0.29	0.17	0.07	0.76
VDem Polyarchy	36,093	28.65	10.84	1	74
Left Truncated	36,093	0.06	0.23	0	1

## Surviving Leaders Sample

Defining leaders as surviving the Cold War end (CWE) period is not straightforward. As such, we adopt a conservative approach. We define the sample of CWE surviving leaders as leaders with at least three years of tenure before the beginning of our CWE period (1988) and at least three years of tenure after our CWE period (1992).

**Table A16:** CWE Surviving Leaders, GWF SSA Sample

Country	Leader	Start	End
Angola	Jose Eduardo Dos Santos	1980	2010
Botswana	Quett Masire	1980	1997
Cameroon	Paul Biya	1983	2010
Congo - Kinshasa	Joseph Mobutu	1966	1996
Gabon	Omar Bongo	1968	2008
Ghana	Jerry John Rawlings	1982	2000
Guinea	Lansana Conte	1984	2008
Guinea-Bissau	Joao Bernardo Vieira	1981	1998
Kenya	Daniel T. Arap Moi	1979	2002
Senegal	Abdou Diouf	1981	1999
Togo	Gnassingbe Eyadema	1967	2004
Zimbabwe	Robert Mugabe	1981	2010

Note: Leader start and end years reflect cabinet observations in our dataset.

## Pooled Logit Models

The average marginal effects plotted in Figure 3 of the main text are calculated using Model 1 in Tables A17, A18, A19, and A20. We create Figure 4 in the main text using Model 1 in Table A20. In each table, Models 2-6 estimate the same specification in Model 1, but using samples with alternative definitions of a utocracy and different subsets of countries. The column labels indicate the sample used. Descriptive statistics for each sample are in Section A2

**Table A17:** Pooled Logit of Minister Survival with 5-year CWE Window, No Controls

	<i>Dependent variable:</i>					
	Minister Exit				VDem	VDem
	GWF	GWF	LIED	LIED	ROW	ROW
	SSA	All	SSA	All	SSA	All
	(1)	(2)	(3)	(4)	(5)	(6)
CWE 5-year	0.41*** (0.10)	0.41*** (0.10)	0.45*** (0.10)	0.40*** (0.10)	0.42*** (0.10)	0.36*** (0.10)
Constant	-1.15*** (0.07)	-1.16*** (0.06)	-1.11*** (0.07)	-1.10*** (0.06)	-1.04*** (0.07)	-1.04*** (0.06)
Observations	34,215	39,791	40,051	47,113	41,776	49,588

*Note:*

\*p<0.05; \*\*p<0.01; \*\*\*p<0.001  
Standard errors clustered by leader.

**Table A18:** Pooled Logit of Minister Survival with 5-year CWE Window, Baseline Controls

	<i>Dependent variable:</i>					
	Minister Exit				VDem	VDem
	GWF SSA	GWF All	LIED SSA	LIED All	ROW SSA	ROW All
	(1)	(2)	(3)	(4)	(5)	(6)
CWE 5-year	0.33*** (0.09)	0.35*** (0.10)	0.35*** (0.09)	0.32** (0.10)	0.37*** (0.09)	0.34** (0.10)
Ln(Oil/Gas Rents)	0.02** (0.01)	0.02** (0.01)	0.02* (0.01)	0.02* (0.01)	0.02* (0.01)	0.02* (0.01)
Personalism	0.17* (0.08)	0.13 (0.07)	0.15 (0.08)	0.14* (0.07)	0.10 (0.08)	0.09 (0.07)
Ln(GDP per Capita)	-0.38*** (0.08)	-0.27*** (0.07)	-0.36*** (0.09)	-0.28*** (0.08)	-0.39*** (0.09)	-0.28*** (0.07)
Cabinet Size	-0.01* (0.01)	-0.01** (0.005)	-0.01** (0.005)	-0.01*** (0.004)	-0.01* (0.01)	-0.01** (0.005)
Left Truncated	-0.27* (0.13)	-0.24* (0.11)	-0.33** (0.13)	-0.25* (0.12)	-0.34** (0.13)	-0.26* (0.12)
Constant	1.87** (0.61)	1.09* (0.53)	1.80** (0.67)	1.23* (0.58)	2.07** (0.66)	1.27* (0.56)
Observations	32,646	38,151	30,547	36,935	30,091	37,172

*Note:*\*p<0.05; \*\*p<0.01; \*\*\*p<0.001  
Standard errors clustered by leader.

**Table A19:** Pooled Logit of Minister Survival with 5-year CWE Window, Tenure Controls

	<i>Dependent variable:</i>					
	Minister Exit				VDem	VDem
	GWF SSA	GWF All	LIED SSA	LIED All	ROW SSA	ROW All
	(1)	(2)	(3)	(4)	(5)	(6)
CWE 5-year	0.33*** (0.09)	0.35*** (0.09)	0.35*** (0.09)	0.33*** (0.10)	0.37*** (0.09)	0.34*** (0.10)
Minister Tenure	0.04 (0.04)	0.03 (0.04)	0.03 (0.04)	0.03 (0.04)	0.03 (0.04)	0.02 (0.03)
Minister Tenure <sup>2</sup>	-0.01 (0.004)	-0.01* (0.004)	-0.01 (0.004)	-0.01 (0.004)	-0.01 (0.004)	-0.01 (0.004)
Minister Tenure <sup>3</sup>	0.0003* (0.0001)	0.0003** (0.0001)	0.0003* (0.0001)	0.0003* (0.0001)	0.0002 (0.0001)	0.0002* (0.0001)
Ln(Oil/Gas Rents)	0.02* (0.01)	0.02** (0.01)	0.01* (0.01)	0.02* (0.01)	0.01 (0.01)	0.01* (0.01)
Personalism	0.21** (0.08)	0.16* (0.06)	0.21** (0.08)	0.19** (0.06)	0.17* (0.08)	0.16* (0.06)
Leader Tenure	-0.09** (0.03)	-0.10** (0.03)	-0.11** (0.03)	-0.12*** (0.03)	-0.12*** (0.03)	-0.13*** (0.03)
Leader Tenure <sup>2</sup>	0.01* (0.002)	0.01** (0.002)	0.01** (0.002)	0.01*** (0.002)	0.01** (0.002)	0.01*** (0.002)
Leader Tenure <sup>3</sup>	-0.0001* (0.0000)	-0.0001** (0.0000)	-0.0001* (0.0000)	-0.0001** (0.0000)	-0.0001** (0.0000)	-0.0001*** (0.0000)
Ln(GDP per Capita)	-0.35*** (0.07)	-0.24*** (0.06)	-0.32*** (0.09)	-0.24*** (0.07)	-0.34*** (0.08)	-0.24*** (0.07)
Cabinet Size	-0.01* (0.01)	-0.01* (0.005)	-0.01* (0.01)	-0.01** (0.005)	-0.01* (0.01)	-0.01* (0.005)
Left Truncated	-0.23 (0.12)	-0.18 (0.11)	-0.26* (0.12)	-0.18 (0.12)	-0.27* (0.12)	-0.19 (0.11)
Constant	1.97*** (0.59)	1.21* (0.51)	1.86** (0.67)	1.35* (0.56)	2.16*** (0.64)	1.42** (0.52)
Observations	32,646	38,151	30,547	36,935	30,091	37,172

*Note:*\*p<0.05; \*\*p<0.01; \*\*\*p<0.001  
Standard errors clustered by leader.

**Table A20:** Pooled Logit of Minister Survival with 5-year CWE Window, Events Controls

	<i>Dependent variable:</i>					
	Minister Exit				VDem	VDem
	GWF SSA	GWF All	LIED SSA	LIED All	ROW SSA	ROW All
	(1)	(2)	(3)	(4)	(5)	(6)
CWE 5-year	0.43*** (0.09)	0.43*** (0.08)	0.42*** (0.09)	0.39*** (0.09)	0.43*** (0.09)	0.39*** (0.09)
Minister Tenure	0.07 (0.04)	0.06 (0.04)	0.06 (0.04)	0.05 (0.04)	0.05 (0.04)	0.05 (0.03)
Minister Tenure <sup>2</sup>	-0.01** (0.004)	-0.01** (0.004)	-0.01** (0.004)	-0.01** (0.004)	-0.01* (0.004)	-0.01** (0.004)
Minister Tenure <sup>3</sup>	0.0004*** (0.0001)	0.0004*** (0.0001)	0.0004** (0.0001)	0.0004*** (0.0001)	0.0004** (0.0001)	0.0004** (0.0001)
Ln(Oil/Gas Rents)	0.02* (0.01)	0.02** (0.01)	0.01 (0.01)	0.02* (0.01)	0.01 (0.01)	0.01* (0.01)
Personalism	0.27*** (0.08)	0.24*** (0.07)	0.25** (0.08)	0.24*** (0.07)	0.23** (0.08)	0.23*** (0.07)
Leader Exit	2.09*** (0.16)	1.95*** (0.15)	2.03*** (0.17)	1.90*** (0.16)	2.09*** (0.17)	1.94*** (0.15)
Leader Tenure	-0.07* (0.03)	-0.08* (0.03)	-0.07* (0.03)	-0.09** (0.03)	-0.08* (0.03)	-0.09** (0.03)
Leader Tenure <sup>2</sup>	0.004 (0.002)	0.005* (0.002)	0.004 (0.002)	0.01** (0.002)	0.004* (0.002)	0.01** (0.002)
Leader Tenure <sup>3</sup>	-0.0001 (0.0000)	-0.0001* (0.0000)	-0.0001 (0.0000)	-0.0001** (0.0000)	-0.0001* (0.0000)	-0.0001** (0.0000)
Election	0.51*** (0.12)	0.53*** (0.11)	0.44*** (0.13)	0.46*** (0.11)	0.44*** (0.13)	0.47*** (0.11)
Failed Coup	0.74*** (0.20)	0.77*** (0.19)	0.70*** (0.19)	0.73*** (0.19)	0.65*** (0.19)	0.68*** (0.19)
Ln(GDP per Capita)	-0.35*** (0.07)	-0.23*** (0.07)	-0.30*** (0.09)	-0.21** (0.08)	-0.33*** (0.08)	-0.21** (0.07)
Cabinet Size	-0.01 (0.01)	-0.01 (0.004)	-0.01 (0.01)	-0.01* (0.004)	-0.01 (0.01)	-0.01 (0.005)
Left Truncated	-0.17 (0.12)	-0.11 (0.11)	-0.21 (0.12)	-0.11 (0.11)	-0.21 (0.12)	-0.12 (0.11)
Constant	1.35* (0.59)	0.56 (0.53)	1.07 (0.68)	0.53 (0.62)	1.31* (0.66)	0.63 (0.56)
Observations	32,646	38,151	30,547	36,935	30,091	37,172

*Note:*\*p<0.05; \*\*p<0.01; \*\*\*p<0.001  
Standard errors clustered by leader.

**Table A27:** Pooled Models of Minister Survival with 5-year CWE Window, Balanced Sample

	No Controls	Baseline	Tenure	Events
	(1)	(2)	(3)	(4)
CWE 5-year	0.38*** (0.11)	0.39*** (0.09)	0.40*** (0.09)	0.45*** (0.09)
Minister Tenure			0.03 (0.04)	0.05 (0.04)
Minister Tenure <sup>2</sup>			-0.01 (0.004)	-0.01* (0.004)
Minister Tenure <sup>3</sup>			0.0002 (0.0001)	0.0004** (0.0001)
Ln(Oil/Gas Rents)		0.02** (0.01)	0.02* (0.01)	0.01* (0.01)
Personalism		0.21* (0.08)	0.25** (0.08)	0.29*** (0.08)
Leader Exit				1.93*** (0.17)
Leader Tenure			-0.10** (0.03)	-0.08* (0.03)
Leader Tenure <sup>2</sup>			0.01** (0.002)	0.004* (0.002)
Leader Tenure <sup>3</sup>			-0.0001* (0.0000)	-0.0001 (0.0000)
Election				0.50*** (0.13)
Failed Coup				0.66** (0.22)
Ln(GDP per Capita)		-0.41*** (0.08)	-0.38*** (0.07)	-0.36*** (0.08)
Cabinet Size		-0.01* (0.01)	-0.01* (0.01)	-0.01 (0.01)
Left Truncated		-0.26 (0.14)	-0.21 (0.14)	-0.15 (0.14)
Constant	-1.09*** (0.07)	2.05*** (0.60)	2.23*** (0.57)	1.47* (0.63)
Observations	36,093	29,786	29,786	29,786

*Note:*

\*p<0.05; \*\*p<0.01; \*\*\*p<0.001  
Standard errors clustered by leader.

**Table A29:** Pooled Logit of Minister Survival, GWF SSA Sample Limited to CWE Surviving Leaders

	<i>Dependent variable:</i>			
	No Controls	Minister Exit		
		Baseline	Tenure	Events
	(1)	(2)	(3)	(4)
CWE 5-year	0.367*	0.389**	0.464***	0.641***
	(0.154)	(0.127)	(0.089)	(0.094)
Minister Tenure			-0.008	-0.005
			(0.063)	(0.061)
Minister Tenure <sup>2</sup>			-0.003	-0.004
			(0.007)	(0.007)
Minister Tenure <sup>3</sup>			0.0002	0.0002
			(0.0002)	(0.0002)
Ln(Oil/Gas Rents)		0.030**	0.029**	0.030***
		(0.011)	(0.010)	(0.009)
Personalism		0.253*	0.222*	0.247
		(0.103)	(0.112)	(0.126)
Leader Exit				2.519***
				(0.378)
Leader Tenure			-0.085	-0.153**
			(0.053)	(0.058)
Leader Tenure <sup>2</sup>			0.005	0.009**
			(0.003)	(0.003)
Leader Tenure <sup>3</sup>			-0.0001	-0.0002**
			(0.0001)	(0.0001)
Election				0.680**
				(0.236)
Failed Coup				0.169
				(0.316)
Ln(GDP per Capita)		-0.666***	-0.644***	-0.633***
		(0.145)	(0.115)	(0.127)
Cabinet Size		-0.013	-0.014	-0.010
		(0.012)	(0.011)	(0.011)
Left Truncated		0.593	0.534	0.495
		(0.366)	(0.335)	(0.382)
Constant	-1.210***	3.854***	4.042***	3.894***
	(0.193)	(1.149)	(1.031)	(1.099)
Observations	9,076	9,076	9,076	9,076

*Note:*

\*p<0.05; \*\*p<0.01; \*\*\*p<0.001  
Standard errors clustered by leader.



**Table A31:** Pooled Logit Models with Senior Minister by CWE Interaction from Figure 5

	<i>Dependent variable:</i>				
	Minister Exit				
	CWE 5-year	CWE 4-year	CWE 3-year	CWE 2-year	CWE 1-year
	(1)	(2)	(3)	(4)	(5)
CWE Window	0.37*** (0.04)	0.68*** (0.05)	0.94*** (0.05)	1.19*** (0.06)	1.45*** (0.09)
Senior Minister	-0.23*** (0.04)	-0.23*** (0.04)	-0.22*** (0.04)	-0.23*** (0.04)	-0.22*** (0.04)
CWE X Senior	0.26** (0.09)	0.21* (0.10)	0.22* (0.10)	0.32** (0.12)	0.74*** (0.17)
Ln(Oil/Gas Rents)	0.02*** (0.002)	0.02*** (0.002)	0.02*** (0.002)	0.02*** (0.002)	0.02*** (0.002)
Personalism	0.27*** (0.02)	0.27*** (0.02)	0.28*** (0.02)	0.28*** (0.02)	0.29*** (0.02)
Leader Exit	2.09*** (0.05)	2.10*** (0.05)	2.10*** (0.05)	2.08*** (0.05)	2.05*** (0.05)
Leader Tenure	-0.06*** (0.01)	-0.06*** (0.01)	-0.06*** (0.01)	-0.07*** (0.01)	-0.07*** (0.01)
Leader Tenure <sup>2</sup>	0.004*** (0.001)	0.003*** (0.001)	0.003*** (0.001)	0.004*** (0.001)	0.004*** (0.001)
Leader Tenure <sup>3</sup>	-0.0001*** (0.0000)	-0.0001*** (0.0000)	-0.0001*** (0.0000)	-0.0001*** (0.0000)	-0.0001*** (0.0000)
Election	0.51*** (0.03)	0.50*** (0.03)	0.49*** (0.03)	0.48*** (0.03)	0.46*** (0.03)
Failed Coup	0.74*** (0.06)	0.73*** (0.06)	0.72*** (0.06)	0.70*** (0.06)	0.79*** (0.06)
Ln(GDP per Capita)	-0.35*** (0.02)	-0.35*** (0.02)	-0.35*** (0.02)	-0.35*** (0.02)	-0.36*** (0.02)
Cabinet Size	-0.01*** (0.001)	-0.01*** (0.001)	-0.01*** (0.001)	-0.01*** (0.001)	-0.01*** (0.001)
Left Truncated	-0.16** (0.06)	-0.13* (0.06)	-0.13* (0.06)	-0.14* (0.06)	-0.17** (0.06)
Constant	1.43*** (0.18)	1.38*** (0.18)	1.39*** (0.18)	1.42*** (0.18)	1.52*** (0.18)
Observations	32,646	32,646	32,646	32,646	32,646

*Note:*\*p<0.05; \*\*p<0.01; \*\*\*p<0.001  
Standard errors clustered by leader.

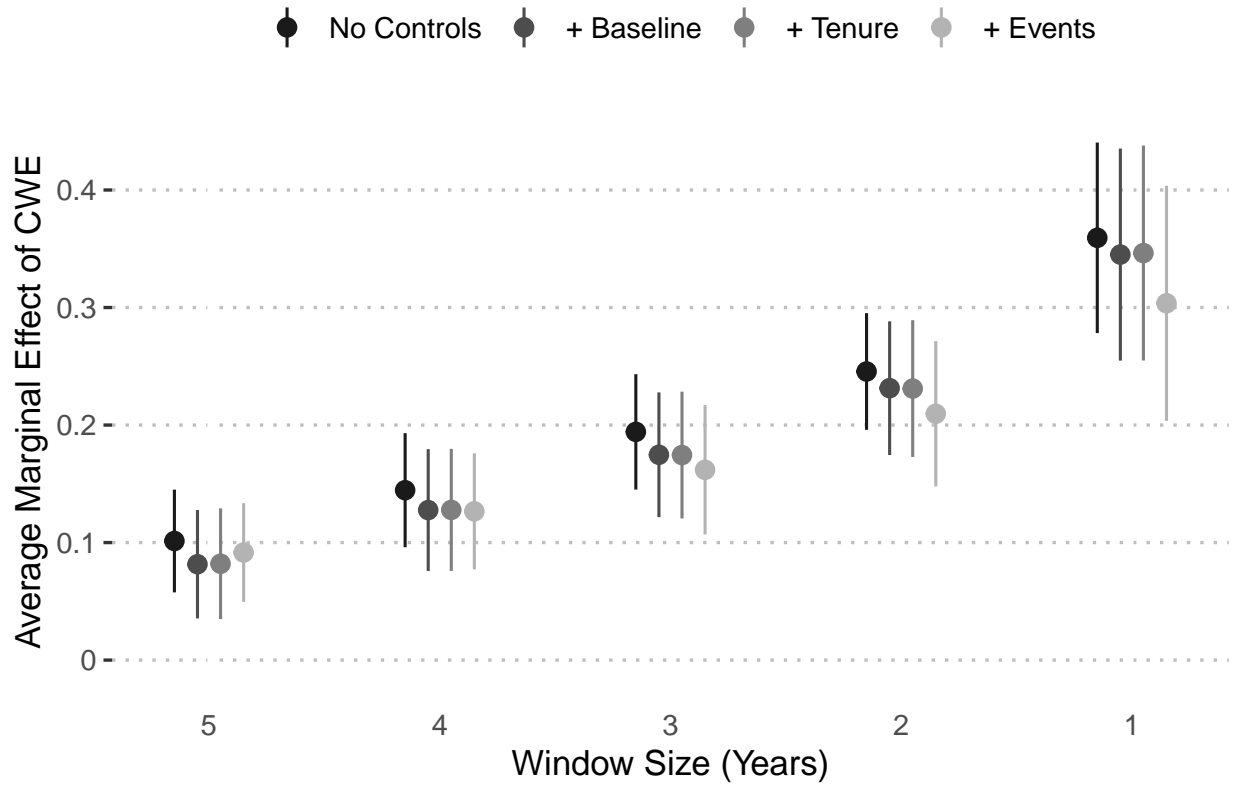


Figure A1: Average Marginal Effects of CWE with 95% Confidence Intervals Limiting the GWF Sub-Saharan Sample to Senior Ministers

**Table A42:** Pooled Logit Models with Coercive Portfolio by CWE Interaction from Figure 6

	<i>Dependent variable:</i>				
	Minister Exit				
	CWE 5-year	CWE 4-year	CWE 3-year	CWE 2-year	CWE 1-year
	(1)	(2)	(3)	(4)	(5)
CWE Window	0.42*** (0.04)	0.72*** (0.04)	0.98*** (0.05)	1.28*** (0.06)	1.66*** (0.08)
Coercive Portfolio	-0.07 (0.05)	-0.08 (0.05)	-0.08 (0.05)	-0.06 (0.05)	-0.06 (0.05)
CWE X Coercive Portfolio	0.01 (0.13)	0.06 (0.14)	0.03 (0.15)	-0.24 (0.18)	-0.24 (0.26)
Ln(Oil/Gas Rents)	0.02*** (0.002)	0.02*** (0.002)	0.02*** (0.002)	0.02*** (0.002)	0.02*** (0.002)
Personalism	0.28*** (0.02)	0.29*** (0.02)	0.29*** (0.02)	0.29*** (0.02)	0.30*** (0.02)
Leader Exit	2.08*** (0.05)	2.10*** (0.05)	2.10*** (0.05)	2.08*** (0.05)	2.04*** (0.05)
Leader Tenure	-0.07*** (0.01)	-0.07*** (0.01)	-0.07*** (0.01)	-0.07*** (0.01)	-0.08*** (0.01)
Leader Tenure <sup>2</sup>	0.004*** (0.001)	0.004*** (0.001)	0.004*** (0.001)	0.004*** (0.001)	0.004*** (0.001)
Leader Tenure <sup>3</sup>	-0.0001*** (0.0000)	-0.0001*** (0.0000)	-0.0001*** (0.0000)	-0.0001*** (0.0000)	-0.0001*** (0.0000)
Election	0.51*** (0.03)	0.50*** (0.03)	0.49*** (0.03)	0.48*** (0.03)	0.46*** (0.03)
Failed Coup	0.74*** (0.06)	0.74*** (0.06)	0.73*** (0.06)	0.71*** (0.06)	0.80*** (0.06)
Ln(GDP per Capita)	-0.37*** (0.02)	-0.37*** (0.02)	-0.37*** (0.02)	-0.36*** (0.02)	-0.37*** (0.02)
Cabinet Size	-0.01*** (0.001)	-0.01*** (0.001)	-0.01*** (0.001)	-0.01*** (0.001)	-0.01*** (0.001)
Left Truncated	-0.18** (0.06)	-0.16** (0.06)	-0.15** (0.06)	-0.17** (0.06)	-0.19** (0.06)
Constant	1.54*** (0.18)	1.49*** (0.18)	1.50*** (0.18)	1.52*** (0.18)	1.61*** (0.18)
Observations	32,646	32,646	32,646	32,646	32,646

*Note:*

\*p<0.05; \*\*p<0.01; \*\*\*p<0.001  
Standard errors clustered by leader.

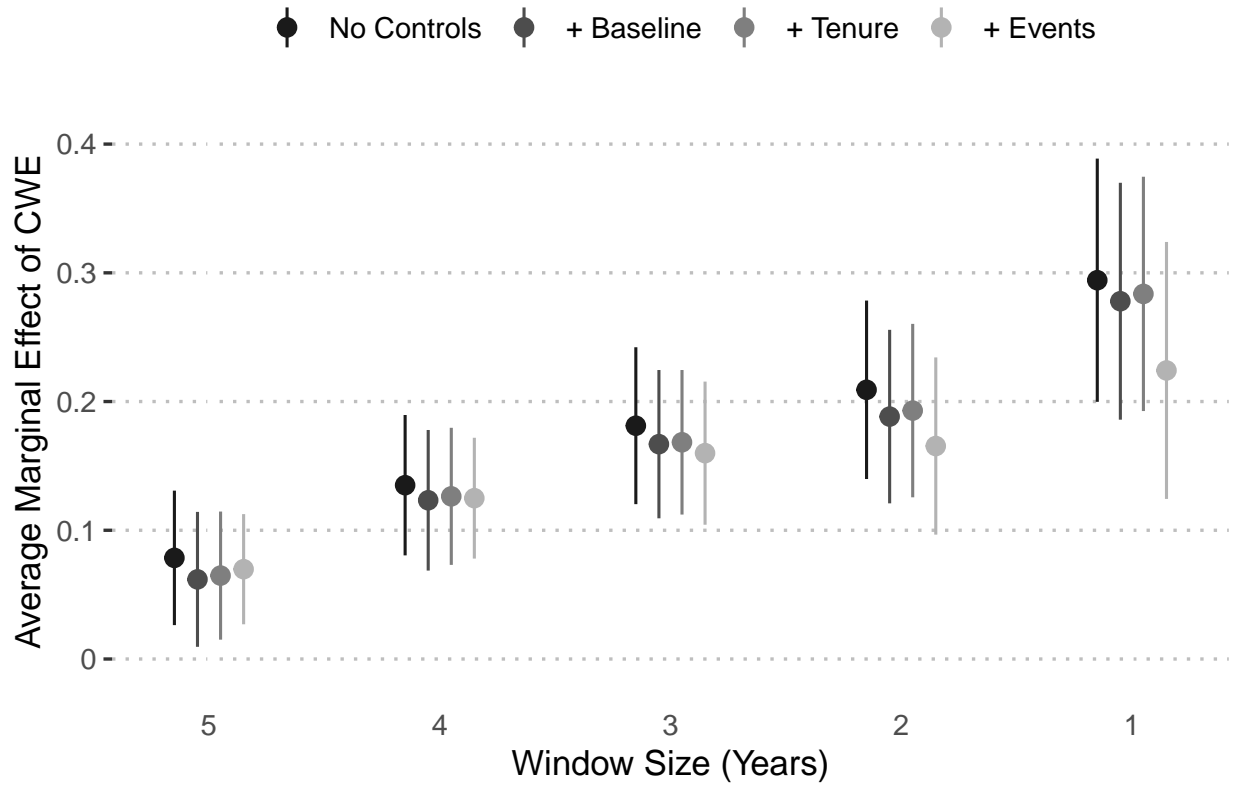
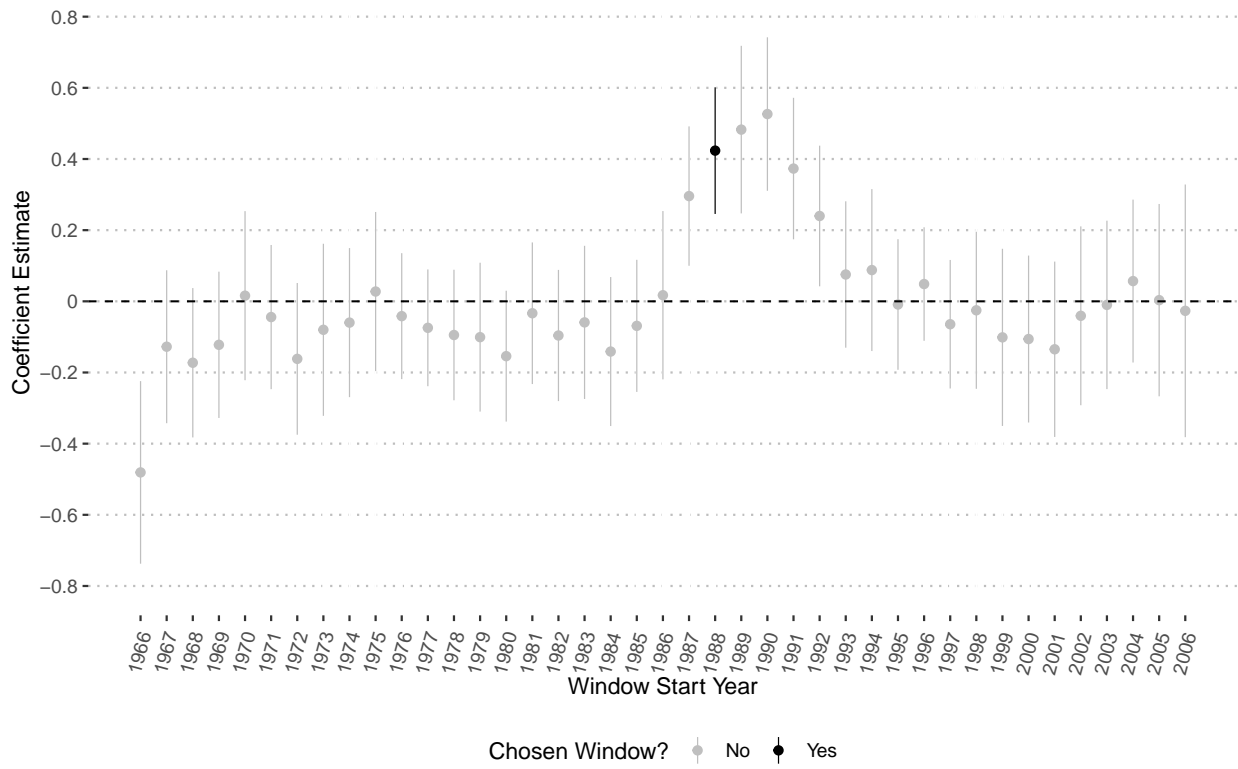
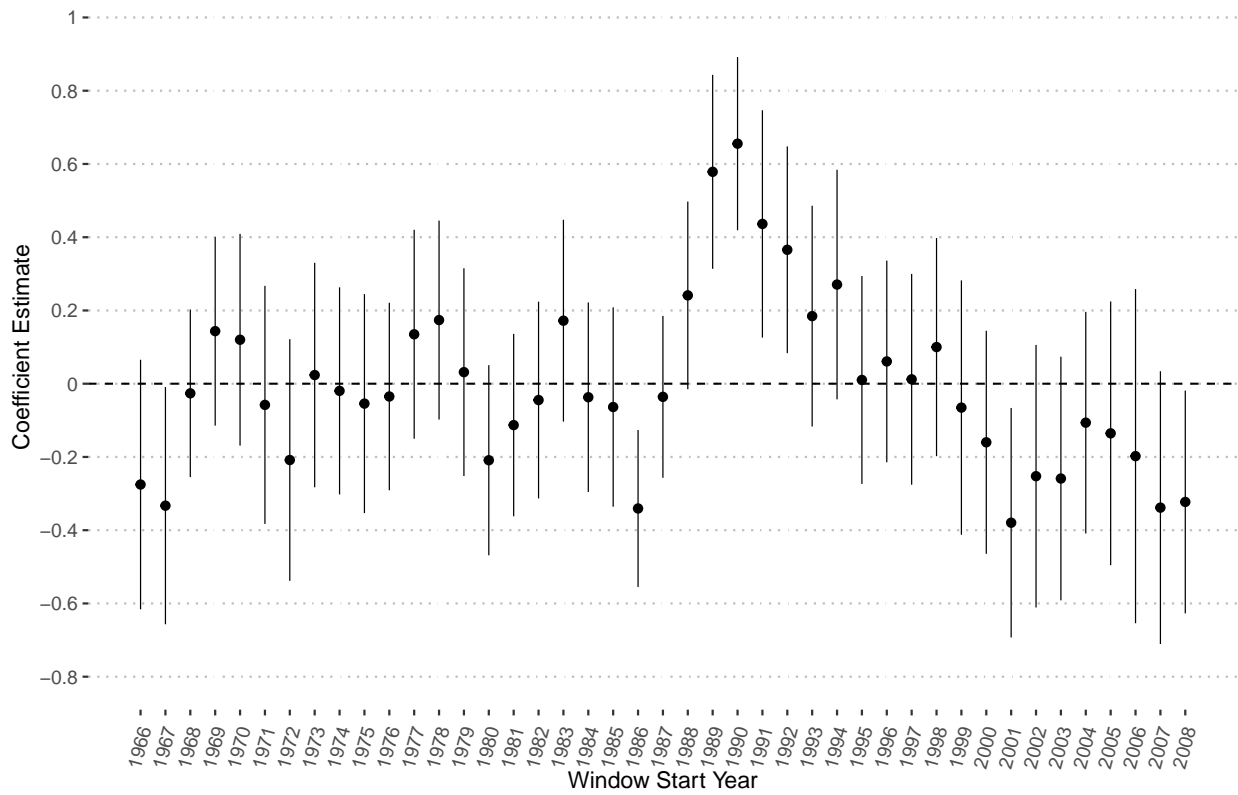


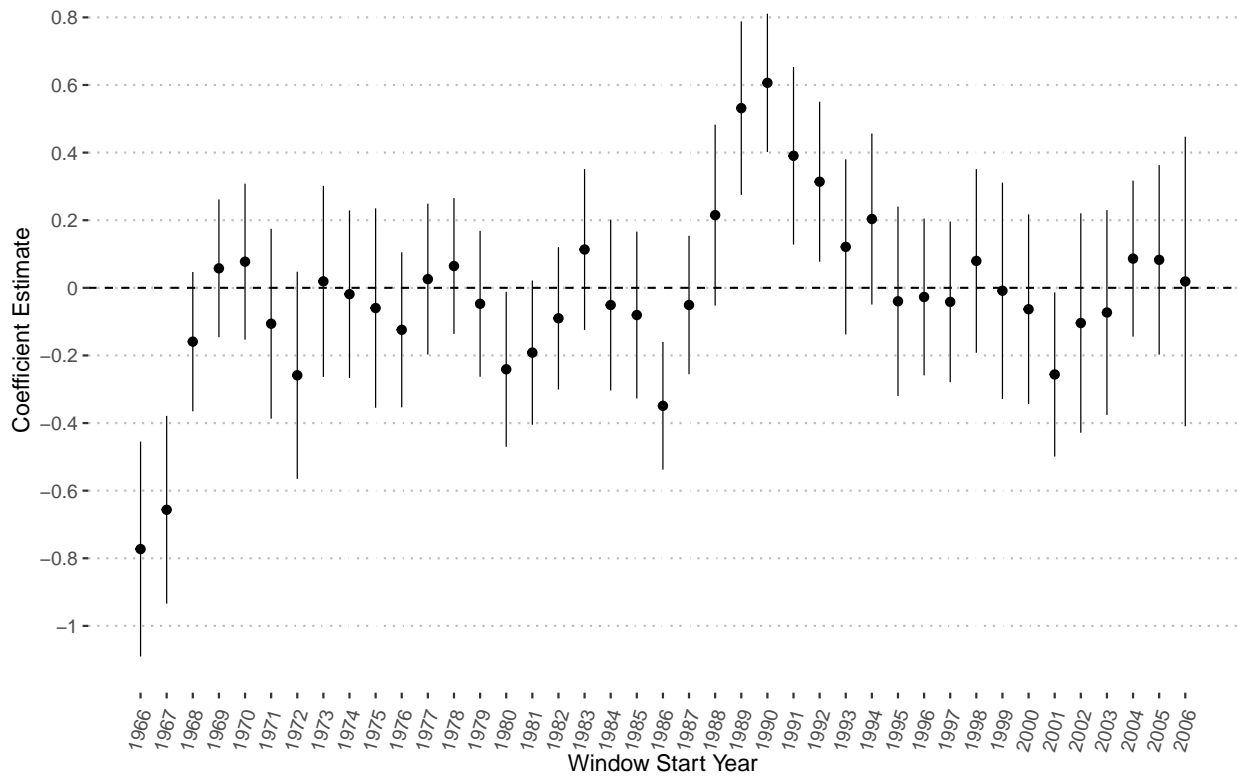
Figure A2: Average Marginal Effects of CWE with 95% Confidence Intervals Limiting the GWF Sub-Saharan Sample to Coercive Portfolio Ministers



**Figure A6: Five-Year Window Placebo Test: CWE Coefficients with 95% Confidence Intervals from Conditional Fixed Effects Logit Model (Leader Fixed Effects)**



**Figure A7: Three-Year Window Placebo Test: CWE Coefficients with 95% Confidence Intervals**



**Figure A8: Three-Year Window Placebo Test: CWE Coefficients with 95% Confidence Intervals from Conditional Fixed Effects Logit Model (Leader Fixed Effects)**

**Table A64:** Pooled Logit Model of Senior Minister Exit Across Cold War, Cold War End, and Post-Cold War from Figure 9

	<i>Dependent variable:</i>
	Minister Exit
CWE 5-year	0.29** (0.10)
Senior	-0.30** (0.10)
Post-Cold War	-0.17 (0.14)
ln(Oil/Gas Rents)	0.02* (0.01)
Personalism	0.27*** (0.08)
Leader exit	2.09*** (0.16)
Leader tenure	-0.06 (0.03)
Leader tenure <sup>2</sup>	0.003 (0.002)
Leader tenure <sup>3</sup>	-0.0001 (0.0000)
Election	0.52*** (0.12)
Failed coup	0.72*** (0.20)
ln(GDP per capita)	-0.38*** (0.08)
Cabinet size	-0.004 (0.01)
Left truncated	-0.20 (0.11)
CWE 5-year X Senior	0.33* (0.17)
Post-Cold War X Senior	0.15 (0.14)
Constant	1.61* (0.63)
Observations	32,646
Log Likelihood	-16,579.59
Akaike Inf. Crit.	33,193.18

*Note:* \*p<0.05; \*\*p<0.01; \*\*\*p<0.001  
Standard errors clustered by leader.