

Online Appendix of “Race, Protest and Political Ambition”

A.1 Full Results

For reasons of completeness, Table A.1 displays the full regression results underlying Figure 2. At the bottom we denote which of the six panels of Figure 2 the regression model refers to. They are presented in the same order as in the figure, meaning that the first model refers to the upper left panel of the figure (No Controls) and the last model refers to the lower right panel (All Controls).

Table A.1: Full Regression Results for Figure 2. Dependent variable: Willingness to Run.

	(1)	(2)	(3)	(4)	(5)	(6)
Latino	0.0408*** (0.0108)	0.0220** (0.0108)	0.0511*** (0.0108)	0.0469*** (0.0105)	0.0144 (0.0103)	0.0149 (0.0104)
Black	0.0443*** (0.0100)	0.0377*** (0.0101)	0.0480*** (0.0106)	0.0370*** (0.00967)	0.00198 (0.00967)	0.0128 (0.0103)
Asian	-0.00762 (0.0104)	-0.0255** (0.0111)	0.00380 (0.0104)	0.0102 (0.0101)	-0.0190* (0.0101)	-0.00669 (0.0107)
<i>Income Categories:</i>						
2		-0.0122 (0.0166)				-0.0174 (0.0156)
3		0.00322 (0.0174)				0.00303 (0.0165)
4		-0.0354** (0.0171)				-0.0333** (0.0162)
5		-0.0409** (0.0159)				-0.0517*** (0.0151)
6		-0.0396** (0.0187)				-0.0431** (0.0173)
7		-0.0455*** (0.0169)				-0.0527*** (0.0162)
8		-0.0473** (0.0189)				-0.0506*** (0.0183)
9		-0.0233 (0.0188)				-0.0300* (0.0179)

Continued on next page

Full Regression Results (continued)

	(1)	(2)	(3)	(4)	(5)	(6)
10		-0.0348**				-0.0465***
		(0.0156)				(0.0146)
11		-0.0364*				-0.0498***
		(0.0192)				(0.0183)
12		0.00138				-0.0190
		(0.0208)				(0.0195)
<i>Education Categories:</i>						
2		-0.0506				-0.0102
		(0.0444)				(0.0425)
3		-0.0425				-0.0229
		(0.0426)				(0.0411)
4		-0.0299				-0.0155
		(0.0426)				(0.0411)
5		-0.0138				-0.0101
		(0.0430)				(0.0415)
6		-0.0101				-0.0189
		(0.0425)				(0.0412)
7		0.0149				-0.000730
		(0.0430)				(0.0415)
Unemployed		-0.0237*				-0.000705
		(0.0124)				(0.0117)
Woman		-0.0776***				-0.0571***
		(0.00742)				(0.00709)
Age		-0.00377***				0.00144

Continued on next page

Full Regression Results (continued)

	(1)	(2)	(3)	(4)	(5)	(6)
Age ²		(0.00144) 2.37e-06				(0.00126) -4.13e-05***
Foreign-Born		(1.55e-05) -0.00881				(1.32e-05) 0.00120
American Citizen		(0.0108) -0.0103				(0.0105) -0.0280*
General Political Interest		(0.0160)	0.213***			(0.0156) 0.145***
L-R Ideology			(0.0120) -0.106***			(0.0123) -0.0308**
Republican			(0.0171) 0.00242			(0.0157) 0.0176
Democrat			(0.0245) -0.0473**			(0.0235) -0.0187
Independent			(0.0235) -0.0161			(0.0227) 8.06e-05
Political Participation Index			(0.0236)	0.236***		(0.0228) 0.155***
Conservative Cause (Protest/Rally)				(0.0173) 0.147***		(0.0185) 0.0892***
Liberal Cause (Protest/Rally)				(0.0348) 0.254***		(0.0337) 0.118***
Attend BLM Rally				(0.0277)	0.156***	(0.0292) 0.0879***

Continued on next page

Full Regression Results (continued)

	(1)	(2)	(3)	(4)	(5)	(6)
Donate to BLM					0.0839*** (0.0140)	0.0538*** (0.0142)
Attend Rally Immig. Reform					0.0911*** (0.0156)	0.0195 (0.0159)
Donate to Immig. Reform					0.103*** (0.0305)	0.0624*** (0.0313)
Constant	0.136*** (0.00730)	0.483*** (0.0547)	0.0739*** (0.0253)	0.0834*** (0.00719)	0.0998*** (0.0169)	0.201*** (0.0168)
Observations	14,434	14,434	14,434	14,434	14,434	14,434
R-squared	0.004	0.046	0.042	0.076	0.089	0.147
<i>Controls:</i>						
SES and Demography	No	Yes	No	No	No	Yes
General Political Interest and Ideology	No	No	Yes	No	No	Yes
Past Political Mobilization	No	No	No	Yes	No	Yes
Mobilization for Racial Justice	No	No	No	No	Yes	Yes

A.2 Main Results - Unrestricted Sample

The analyses in Figure 2 and Table A.1 include only respondents for which all controls are fully observed. In Table A.2 we show that results are robust to relaxing this restriction. Specifically, we run the same regressions as shown in Table A.1 without any such sample restrictions. For the sake of brevity, the regression coefficients for control variables are suppressed.

Table A.2: Unrestricted Regression Results. Dependent variable: Willingness to Run.

	(1)	(2)	(3)	(4)	(5)	(6)
Latino	0.0292*** (0.00972)	0.0128 (0.0105)	0.0513*** (0.0102)	0.0371*** (0.00944)	0.00852 (0.00932)	0.0149 (0.0104)
Black	0.0278*** (0.00900)	0.0286*** (0.00981)	0.0451*** (0.0100)	0.0227*** (0.00872)	-0.00844 (0.00876)	0.0128 (0.0103)
Asian	-0.0175* (0.00936)	-0.0301*** (0.0108)	4.00e-05 (0.00970)	-0.00114 (0.00913)	-0.0266*** (0.00909)	-0.00669 (0.0107)
Constant	0.136*** (0.00677)	0.442*** (0.0469)	0.0794*** (0.0238)	0.0869*** (0.00672)	0.102*** (0.00654)	0.201*** (0.0541)
Observations	17,650	15,620	16,049	17,650	17,650	14,434
R-squared	0.003	0.042	0.041	0.070	0.078	0.147
<i>Controls:</i>						
SES and Demography	No	Yes	No	No	No	Yes
General Political Interest and Ideology	No	No	Yes	No	No	Yes
Past Political Mobilization	No	No	No	Yes	No	Yes
Mobilization for Racial Justice	No	No	No	No	Yes	Yes

Robust standard errors in parentheses. *** p<0.01, ** p<0.05, * p<0.1

A.3 Main Results - Noncitizens Excluded

The analyses in Figure 2 and Table A.1 include both citizens and noncitizens. In Table A.3 we show that results are robust to restricting our sample to citizens. Specifically, we run the same regressions as shown in Figure 2 and Table A.1 with the additional sample restriction that respondents must be citizens. For the sake of brevity, the regression coefficients for control variables are suppressed.

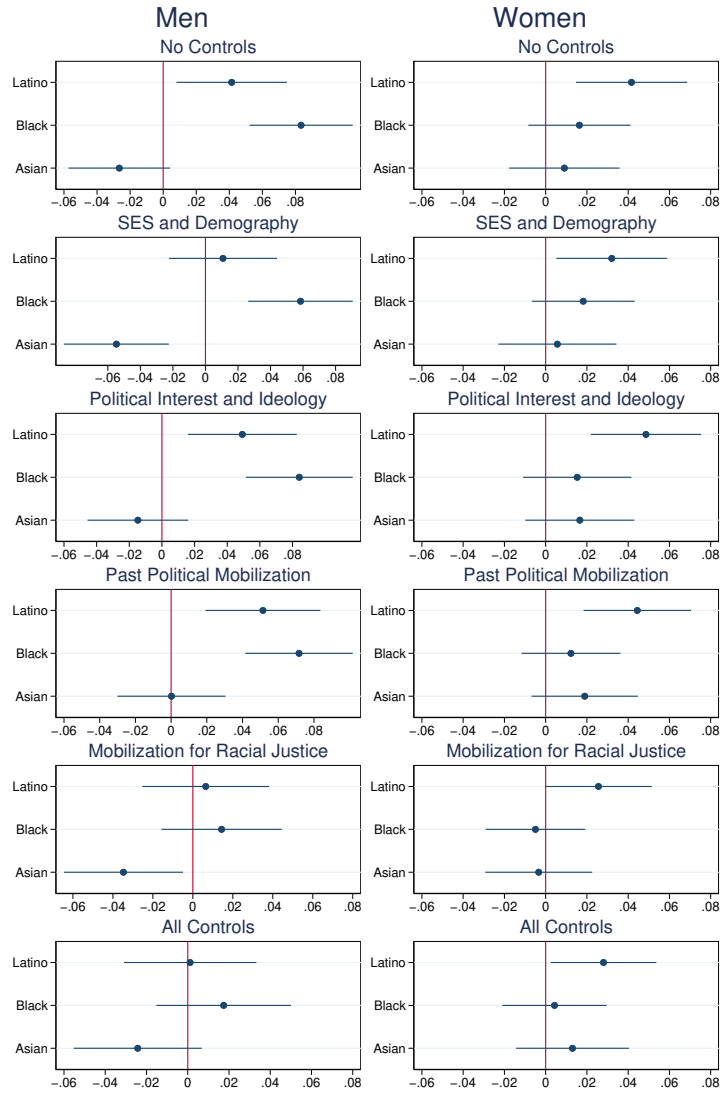
Table A.3: Regression Results Excluding Noncitizens. Dependent variable: Willingness to Run.

	(1)	(2)	(3)	(4)	(5)	(6)
Latino	0.0320*** (0.0112)	0.0176 (0.0111)	0.0386*** (0.0111)	0.0327*** (0.0107)	0.00262 (0.0106)	0.0102 (0.0106)
Black	0.0452*** (0.0102)	0.0409*** (0.0102)	0.0507*** (0.0109)	0.0370*** (0.00981)	0.00144 (0.00982)	0.0171 (0.0105)
Asian	-0.0130 (0.0106)	-0.0264** (0.0113)	-0.00107 (0.0106)	0.00156 (0.0103)	-0.0231** (0.0102)	-0.00463 (0.0108)
Constant	0.136*** (0.00745)	0.497*** (0.0558)	0.0819*** (0.0264)	0.0820*** (0.00731)	0.0985*** (0.00699)	0.192*** (0.0586)
Observations	13,182	13,182	13,182	13,182	13,182	13,182
R-squared	0.004	0.051	0.045	0.085	0.096	0.157
<i>Controls:</i>						
SES and Demography	No	Yes	No	No	No	Yes
General Political Interest and Ideology	No	No	Yes	No	No	Yes
Past Political Mobilization	No	No	No	Yes	No	Yes
Mobilization for Racial Justice	No	No	No	No	Yes	Yes

Robust standard errors in parentheses. *** p<0.01, ** p<0.05, * p<0.1

A.4 Results by Gender

The analyses in Figure 2 and Table A.1 control for gender. Are the gaps and effects different for men and women? In Figure A.1 we show that results are largely similar for men and women. Specifically, we run the same regressions as shown in Figure 2 and Table A.1 separately for men (left column) and women (right column). For Black men, the Mobilization for Racial Justice largely accounts for the gap vs. White men; for Latino men, SES/Demography and Mobilization for Racial Justice do. For Latino and Black women, Mobilization for Racial Justice reduces the gap most. The magnitudes of the gaps differ in some cases. Specifically, the gap vs. Whites is larger for Black men than in the main results, where both genders are pooled. Also, the Black–White gap among women is smaller and not statistically significant.



Note: Plots shows coefficient estimates with 95% confidence intervals from six models that regress willingness to run on race/ethnicity using different sets of control variables. The reference category is White. Models are estimated separately for men and women, and the number of observations is $N = 6,409$ and $N = 8,025$, respectively.

Figure A.1: The impact of race/ethnicity and mobilization for racial justice on the interest in running for office by gender

A.5 Willingness to Run for Office and Mobilization for Racial Justice by Generational and Racial/Ethnic Group

The analysis in Table A.4 shows the relationship between mobilization for racial justice and interest in running for office by race/ethnicity and generation. Like in Figure 1, mobilization for racial justice was dummy coded for ease of presentation, and respondents are coded as having participated in the protests if they had engaged in any of the four acts we focus on in the main paper: Attending a BLM rally, donating money to BLM, attending a rally for immigration reform and donating money to campaigns for immigration reform. The **blue lines** show the willingness to run for office conditional on participation in protest and the **red columns** show participation in protest conditional on interest in running for office. Note that the number of observations in some 2x2 tables is very small.

Beginning with willingness to run for office conditional on participation in protest, the relationship is positive for 18 out of 20 subgroups (the exceptions are Whites and Latinos from the Post-War generation). There is also some suggestive evidence that this positive relationship is somewhat stronger for younger Latinos and Blacks than for same-generation Whites. For example, **25%** of Whites who participated in a protest are interested in running for office, whereas **17%** who did not protest are interested. The likelihood that Gen Z Whites are interested in running for office is thus **8 %-points** higher if they have participated in protest, whereas the corresponding figures for Latinos and Blacks are **over 20 %-points**. Among Millennials, the strongest relationship is found among Blacks, where protest participation increases the likelihood of being interested in running for office by **23 %-points**, and for Gen X, the strongest relationship is found among Latinos (an increase of **22 %-points**).

A different way of examining the same relationship is to analyze protest participation conditional on interest in running for office. These results are shown in the red columns of Table A.4. As expected, results are similar. The relationship is positive for the same 18 out of 20 groups, meaning that the share having protested is higher among those who were interested in running for office than those who were not. Again, we see suggestive evidence that younger (Gen X and below) Latinos and Blacks exhibit the strongest relationships. Among Gen Z Blacks, for example, the share who have participated in protest among those who are interested in running for office is **29 %-points** higher than the corresponding share among those not interested in running. The corresponding differences for Whites, Latinos and Asians are **12, 34 and 19 %-points**, respectively.

Table A.4: Willingness to run (Y/N) and Mobilization for Racial Justice (Y/N) by race and generation. Main entry: $P(\text{Willing} \mid \text{Protest})$. Entries in parentheses: $P(\text{Protest} \mid \text{Willing})$. **Blue** lines calculate ‘effect’ of Protest on Willing. **Red** columns calculate ‘effect’ of Willing on Protest. Entries are percentages, except for Y-N, which are measured in percentage points.

Gen Z

		White			Latino			Black			Asian		
		Protest		Y-N	Protest		Y-N	Protest		Y-N	Protest		Y-N
		Y	N	Y-N	Y	N	Y-N	Y	N	Y-N	Y	N	Y-N
Willing	Y	25 (44)	17 (56)	8	32 (74)	10 (26)	22	32 (86)	9 (14)	23	23 (58)	12 (42)	11
	N	75 (32)	83 (68)		68 (40)	90 (60)		68 (57)	91 (43)		77 (38)	88 (62)	
	Y-N	(12)		$n = 827$	(34)		$n = 918$	(29)		$n = 1,100$	(19)		$n = 799$

Millenials

		Y	N	Y-N	Y	N	Y-N	Y	N	Y-N	Y	N	Y-N
Willing	Y	31 (39)	16 (61)	15	30 (51)	14 (49)	16	36 (61)	13 (39)	23	26 (49)	10 (51)	16
	N	69 (21)	84 (79)		70 (28)	86 (72)		64 (29)	87 (71)		74 (24)	90 (76)	
	Y-N	(18)		$n = 1,143$	(23)		$n = 1,473$	(31)		$n = 1,309$	(25)		$n = 1,125$

Gen X

		Y	N	Y-N	Y	N	Y-N	Y	N	Y-N	Y	N	Y-N
Willing	Y	28 (27)	9 (73)	18	33 (39)	11 (61)	22	26 (45)	10 (55)	17	23 (33)	9 (67)	14
	N	72 (9)	91 (91)		67 (14)	89 (86)		74 (20)	90 (80)		77 (14)	91 (86)	
	Y-N	(18)		$n = 813$	(25)		$n = 955$	(25)		$n = 1,157$	(19)		$n = 1,090$

Boomer

		Y	N	Y-N	Y	N	Y-N	Y	N	Y-N	Y	N	Y-N
Willing	Y	23 (20)	7 (80)	16	23 (29)	7 (71)	16	16 (35)	7 (65)	9	16 (30)	5 (70)	11
	N	77 (6)	93 (94)		77 (9)	93 (91)		84 (18)	93 (82)		84 (10)	95 (90)	
	Y-N	(15)		$n = 1,432$	(20)		$n = 733$	(17)		$n = 1,269$	(20)		$n = 997$

Post-War

		Y	N	Y-N	Y	N	Y-N	Y	N	Y-N	Y	N	Y-N
Willing	Y	5 (4)	5 (96)	-0	0 (0)	3 (100)	-3	17 (48)	6 (52)	12	8 (15)	4 (85)	3
	N	95 (4)	95 (96)		100 (10)	97 (90)		83 (21)	94 (79)		92 (9)	96 (91)	
	Y-N	(-0)		$n = 248$	(-10)		$n = 36$	(27)		$n = 95$	(6)		$n = 128$

Note: The number of observations in the 2x2 tables ranges between 36 and 1,473 .

A.6 Regression Results by Race

Our interpretation of the main results in Figure 2 and Table A.1 assumes that mobilization for racial justice increases willingness to run for all racial/ethnic groups. In Table A.5, we show the results when estimating the model with the full set of controls separately for each race/ethnicity. The most important finding is that the four measures of mobilization for racial justice are positively related to interest in running for office in fourteen out of sixteen cases.²² Moreover nine out of fourteen positive coefficients are statistically significant at conventional levels. The only coefficient that stands out is that for Attending an immigration reform rally, which for Whites and Asians has a small negative relationship to willingness to run. In sum, our measures of mobilization for racial justice to be consistently linked to interest in running for office across all racial/ethnic groups.

Table A.5: Results by Race. Dependent variable: Willingness to Run.

	(1) White	(2) Latino	(3) Black	(4) Asian
<i>Income Categories:</i>				
2	-0.0449 (0.0354)	-0.00712 (0.0282)	-0.0169 (0.0231)	-0.0366 (0.0489)
3	-0.0554* (0.0327)	0.0525 (0.0339)	0.00593 (0.0246)	-0.000623 (0.0520)
4	-0.0399 (0.0356)	0.00384 (0.0321)	-0.0528** (0.0249)	-0.0741* (0.0442)
5	-0.0738** (0.0338)	-0.0634** (0.0265)	-0.0128 (0.0268)	-0.0904** (0.0389)
6	-0.0558 (0.0382)	-0.00886 (0.0334)	-0.0425 (0.0282)	-0.0887** (0.0395)
7	-0.0612* (0.0349)	-0.0169 (0.0355)	-0.0627** (0.0265)	-0.0962** (0.0388)
8	-0.0472 (0.0381)	-0.0291 (0.0384)	-0.0668** (0.0334)	-0.0918** (0.0407)
9	-0.0549 (0.0349)	-0.00997 (0.0344)	-0.0489 (0.0376)	-0.0485 (0.0440)
10	-0.0657** (0.0320)	-0.0472 (0.0301)	-0.0195 (0.0259)	-0.0825** (0.0359)
11	-0.0671* (0.0377)	-0.0158 (0.0504)	-0.0756** (0.0322)	-0.0750* (0.0400)
12	-0.00689 (0.0415)	0.0232 (0.0587)	-0.00104 (0.0441)	-0.0830** (0.0389)
<i>Education Categories:</i>				
2	-0.120 (0.0885)	-0.00192 (0.0697)	0.0651 (0.0869)	0.0351 (0.0917)
3	-0.113 (0.0885)	-0.0289 (0.0650)	0.0819 (0.0845)	-0.0326 (0.0909)
4	-0.0833 (0.0878)	-0.0340 (0.0648)	0.0827 (0.0847)	-0.0352 (0.0912)
5	-0.103	-0.0631	0.123	0.00356

Continued on next page

Regression Results by Race (continued)

	(1) White	(2) Latino	(3) Black	(4) Asian
6	(0.0887) -0.0998	(0.0655) -0.0430	(0.0856) 0.0855	(0.0924) -0.0125
7	(0.0880) -0.0730	(0.0655) -0.0144	(0.0851) 0.0937	(0.0900) 0.00142
Unemployed	(0.0885) 0.0173	(0.0674) -0.0197	(0.0862) -0.0169	(0.0904) 0.0273
Woman	(0.0258) -0.0580***	(0.0221) -0.0522***	(0.0189) -0.0710***	(0.0283) -0.0334**
Age	(0.0135) 0.000204	(0.0155) 0.00423*	(0.0133) 0.000888	(0.0149) 0.00120
Age ²	(0.00228) -2.92e-05	(0.00242) -6.69e-05***	(0.00220) -4.13e-05*	(0.00269) -3.35e-05
Foreign-Born	(2.31e-05) -0.0219	(2.51e-05) -0.00814	(2.35e-05) 0.0514	(2.67e-05) -0.00513
American Citizen	(0.0195) -0.0423	(0.0214) -0.0557*	(0.0339) 0.0654	(0.0161) -0.0153
General Political Interest	(0.0399) 0.147***	(0.0291) 0.119***	(0.0494) 0.169***	(0.0240) 0.159***
L-R Ideology	(0.0214) -0.0328	(0.0283) -0.0464	(0.0243) -0.00433	(0.0255) -0.0575
Republican	(0.0317) 0.0339	(0.0311) 0.0358	(0.0263) 0.0495	(0.0375) -0.0336
Democrat	(0.0354) -0.0200	(0.0435) 0.0116	(0.0562) -0.0562	(0.0645) -0.0388
Independent	(0.0352) 0.0200	(0.0413) 0.0174	(0.0457) -0.0357	(0.0644) -0.0333
Political Participation Index	(0.0343) 0.128***	(0.0414) 0.183***	(0.0469) 0.178***	(0.0639) 0.123***
Conservative Cause (Protest/Rally)	(0.0340) 0.185***	(0.0395) -0.0542	(0.0312) 0.0625	(0.0437) 0.112
Liberal Cause (Protest/Rally)	(0.0551) 0.114	(0.0674) 0.133**	(0.0627) 0.0862**	(0.0821) 0.176***

Continued on next page

Regression Results by Race (continued)

	(1)	(2)	(3)	(4)
	White	Latino	Black	Asian
Attend BLM Rally	(0.0737) 0.0608*	(0.0527) 0.0857***	(0.0408) 0.106***	(0.0663) 0.0830***
Donate to BLM	(0.0343) 0.0865**	(0.0282) 0.0557	(0.0218) 0.0546**	(0.0318) 0.0232
Attend Rally Immig. Reform	(0.0417) -0.0195	(0.0342) 0.123**	(0.0234) 0.0140	(0.0307) -0.146**
Donate to Immig. Reform	(0.0786) 0.0689	(0.0529) 0.0471	(0.0499) 0.0565**	(0.0621) 0.0710**
Constant	(0.0452) 0.332***	(0.0308) 0.165*	(0.0288) 0.0653	(0.0316) 0.216*
	(0.108)	(0.100)	(0.117)	(0.116)
Racial/Ethnic Group	White	Latino	Black	Asian
Observations	3,697	3,344	4,014	3,379
R-squared	0.159	0.137	0.188	0.121
SES and Demography	Yes	Yes	Yes	Yes
General Political Interest and Ideology	Yes	Yes	Yes	Yes
Past Political Mobilization	Yes	Yes	Yes	Yes
Mobilization for Racial Justice	Yes	Yes	Yes	Yes
Adj. R-squared	0.151	0.128	0.181	0.112