

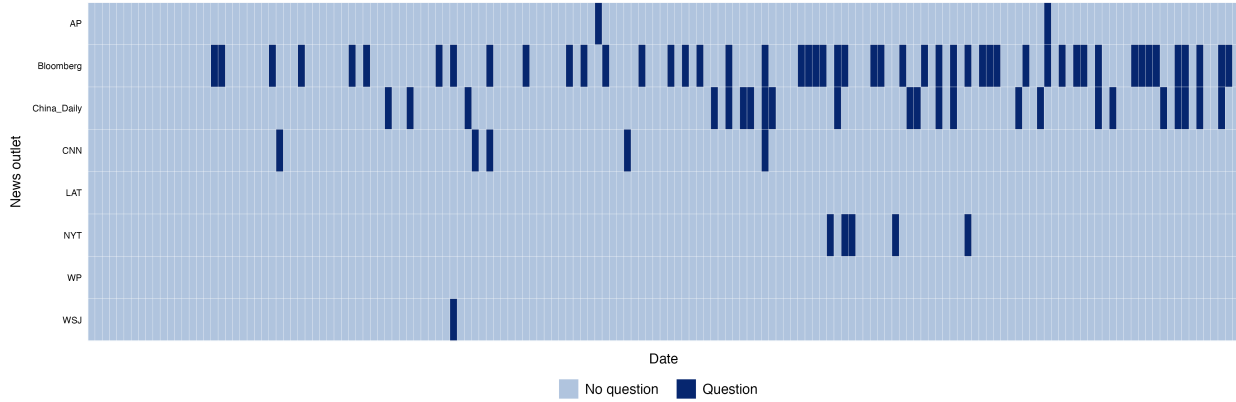
ONLINE APPENDIX

Can Autocratic Power Influence the Media in Democracies?

Evidence from China's Expulsion of American Journalists

Appendix A: Data

Figure A1: *The presence of foreign media in China*
(March 24, 2020 to September 30, 2020)



Notes. The highlighted cell indicates that the news outlet was called for questions at the press conference of China's Ministry of Foreign Affairs.

Figure A2: Distribution of news tone before and after the expulsion

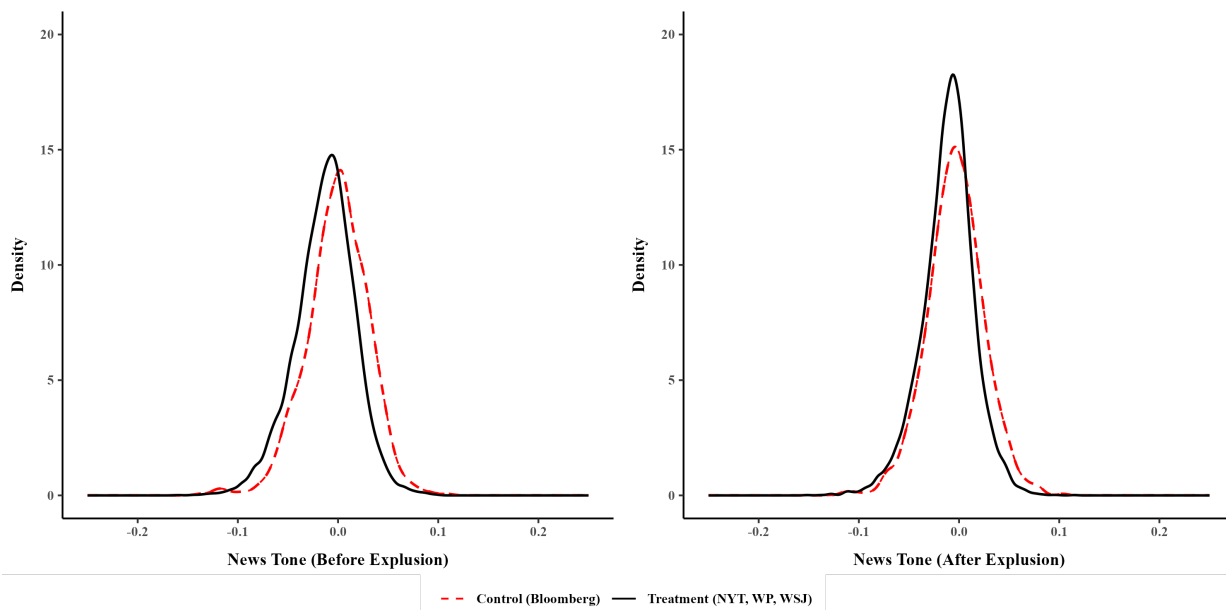


Figure A3: Correlation of the two news tone measures

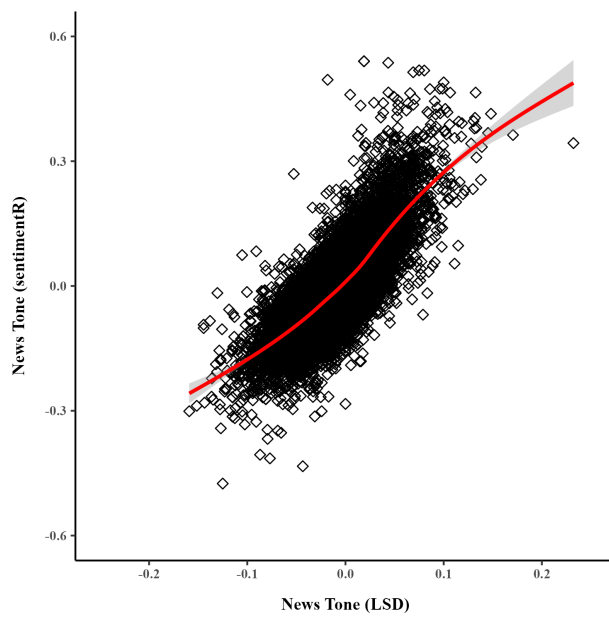


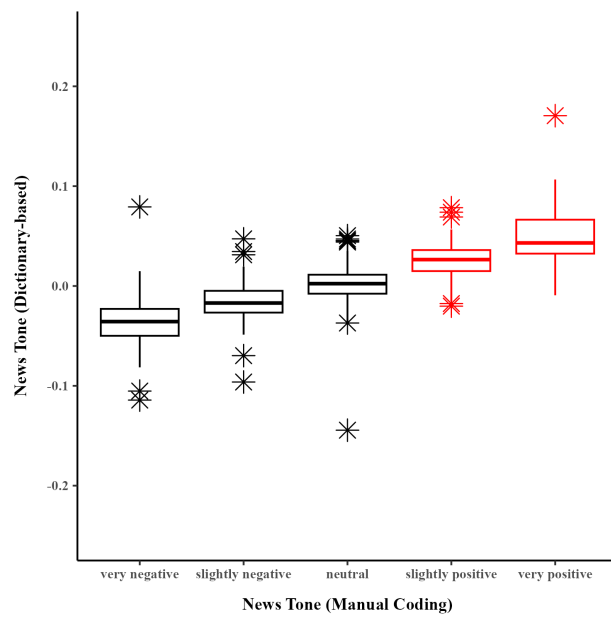
Figure A4: Comparison with manual coding

Table A1: Article examples

News outlet	Most negative articles	Most positive articles
<i>The New York Times</i>	Attack at school in China leaves at least 8 children dead 51 children hurt in chemical attack at Chinese elementary school	In struggle over Parthenon marbles, Greece gets unexpected ally: Xi Jinping Eric Schmidt: I used to run Google. Silicon Valley could lose to China.
<i>The Washington Post</i>	Amid international skepticism, China defends its official data after revising Wuhan death toll upward by 50 percent 'I will die with the city': A young woman's chilling message from Hong Kong's front lines	National zoo is on panda cub watch These are the women leading China's wine revolution
<i>The Wall Street Journal</i>	Hong Kong in disarray after night of intense clashes Beijing can't bring home the bacon	China's unicorn population flourishes, but for how long? China's drug market is opening up
Bloomberg News	China trolls U.S. over protests after Trump criticized Hong Kong U.S. warns its citizens in China they risk 'arbitrary' arrest	Alibaba's luxury venture with Richemont goes online in China China's Xi writes thank-you letter to Bill Gates for virus help

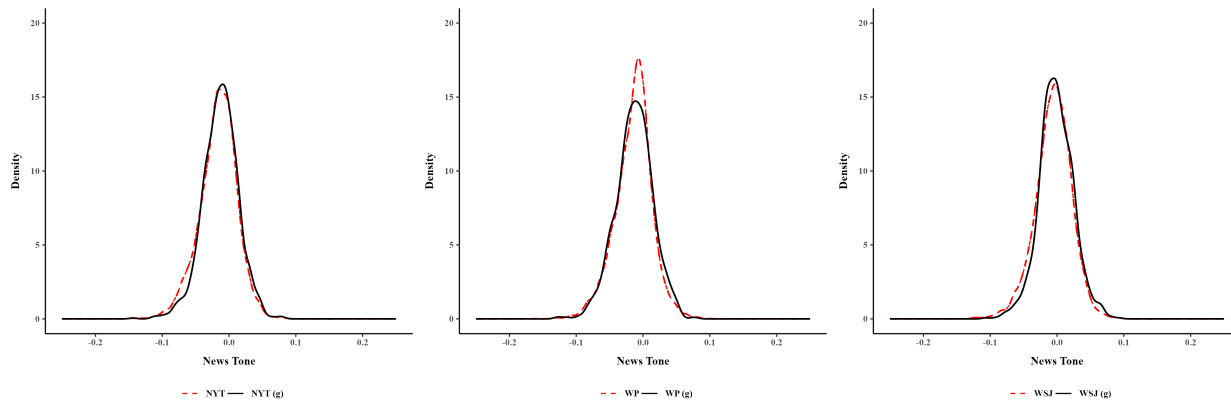
Table A2: Summary statistics I

Variable	Mean	Std. Dev.	Min.	Max.	N
<i>The New York Times (pre-expulsion)</i>					
News tone (LSD)	-0.013	0.028	-0.144	0.087	1083
News tone (sentimentR)	-0.017	0.084	-0.302	0.239	1083
News length	749.088	349.656	61	3119	1083
China-related keywords	14.155	12.383	3	64	1083
<i>The New York Times (post-expulsion)</i>					
News tone (LSD)	-0.014	0.024	-0.115	0.063	1186
News tone (sentimentR)	-0.028	0.071	-0.346	0.252	1186
News length	1043.703	763.565	69	3172	1186
China-related keywords	13.132	12.234	3	86	1186
<i>The Washington Post (pre-expulsion)</i>					
News tone (LSD)	-0.011	0.028	-0.118	0.084	1208
News tone (sentimentR)	-0.014	0.084	-0.299	0.309	1208
News length	686.97	409.138	107	3175	1208
China-related keywords	13.254	11.009	3	74	1208
<i>The Washington Post (post-expulsion)</i>					
News tone (LSD)	-0.011	0.024	-0.128	0.099	2188
News tone (sentimentR)	-0.016	0.072	-0.368	0.3	2188
News length	1169.027	911.551	76	3350	2188
China-related keywords	11.54	10.225	3	92	2188
<i>The Wall Street Journal (pre-expulsion)</i>					
News tone (LSD)	-0.001	0.026	-0.121	0.097	1753
News tone (sentimentR)	0.012	0.076	-0.281	0.269	1753
News length	496.665	242.851	40	3152	1753
China-related keywords	10.254	8.872	3	77	1753
<i>The Wall Street Journal (post-expulsion)</i>					
News tone (LSD)	-0.001	0.025	-0.097	0.094	1832
News tone (sentimentR)	0.002	0.071	-0.267	0.283	1832
News length	557.301	296.777	54	3116	1832
China-related keywords	11.617	10.425	3	83	1832
<i>Bloomberg (gsample) (pre-expulsion)</i>					
News tone (LSD)	0.004	0.027	-0.113	0.09	580
News tone (sentimentR)	0.033	0.091	-0.301	0.334	580
News length	382.659	226.783	46	1530	580
China-related keywords	11.953	9.085	3	93	580
<i>Bloomberg (gsample) (post-expulsion)</i>					
News tone (LSD)	-0.001	0.028	-0.114	0.105	705
News tone (sentimentR)	0.01	0.098	-0.293	0.496	705
News length	428.936	228.482	37	1952	705
China-related keywords	13.99	9.268	3	66	705

Table A3: Summary statistics II

Variable	Mean	Std. Dev.	Min.	Max.	N
<i>China Daily (gsample) (pre-expulsion)</i>					
News tone (LSD)	0.042	0.036	-0.146	0.232	483
News tone (sentimentR)	0.179	0.132	-0.25	0.675	483
News length	352.642	238.14	35	2491	483
China-related keywords	13.547	10.875	3	94	483
<i>China Daily (gsample) (post-expulsion)</i>					
News tone (LSD)	0.034	0.034	-0.09	0.152	543
News tone (sentimentR)	0.147	0.127	-0.266	0.64	543
News length	348.661	353.177	37	3735	543
China-related keywords	11.856	13.414	3	149	543

Figure A5: Comparison of news tone between all articles and articles sampled by Google Search



Appendix B: Additional results

Table B1: *The effect of the expulsion on news tone*
(clustered standard errors)

	All		NYT	WP	WSJ
	(1)	(2)	(3)	(4)	(5)
T			-0.018** (0.000)	-0.016*** (0.000)	-0.004** (0.000)
Post			-0.005** (0.000)	-0.005** (0.000)	-0.005*** (0.000)
T × Post	0.004*** (0.000)	0.004** (0.001)	0.003** (0.000)	0.003** (0.000)	0.005*** (0.000)
Comparison	Bloomberg (g)	Bloomberg (g)	Bloomberg (g)	Bloomberg (g)	Bloomberg (g)
Controls		✓	✓	✓	✓
Year-month FEs	✓	✓			
News-outlet FEs	✓	✓			
Adjusted R ²	0.068	0.071	0.070	0.057	0.008
Observations	10535	10535	3554	4681	4870

Notes. g = Articles sampled by Google Search. Standard errors clustered at news outlet level are reported in parentheses. * $p < 0.10$, ** $p < 0.05$, *** $p < 0.01$.

**Table B2: The effect of the expulsion on news tone
(sentimentR)**

	All		NYT	WP	WSJ
	(1)	(2)	(3)	(4)	(5)
T			-0.050*** (0.005)	-0.050*** (0.004)	-0.020*** (0.004)
Post			-0.022*** (0.005)	-0.023*** (0.005)	-0.022*** (0.005)
T × Post	0.012** (0.005)	0.010** (0.005)	0.011* (0.006)	0.015** (0.006)	0.013** (0.006)
Comparison	Bloomberg (g)	Bloomberg (g)	Bloomberg (g)	Bloomberg (g)	Bloomberg (g)
Controls		✓	✓	✓	✓
Year-month FEs	✓	✓			
News-outlet FEs	✓	✓			
Adjusted R ²	0.084	0.086	0.064	0.049	0.016
Observations	10535	10535	3554	4681	4870

Notes. g = Articles sampled by Google Search. Standard errors based on 1,000 bootstrap resamples are reported in parentheses. * $p < 0.10$, ** $p < 0.05$, *** $p < 0.01$.

**Table B3: The effect of the expulsion on news tone
(using different samples of articles)**

	Google Sample		Restrictive Sample	
	(1)	(2)	(3)	(4)
T × Post	0.004** (0.002)	0.004** (0.002)	0.004** (0.002)	0.003* (0.002)
Comparison	Bloomberg (g)	Bloomberg (g)	Bloomberg (g)	Bloomberg (g)
Controls		✓		✓
Year-month FEs	✓	✓	✓	✓
News-outlet FEs	✓	✓	✓	✓
Adjusted R ²	0.072	0.072	0.070	0.073
Observations	4746	4746	8434	8434

Notes. g = Articles sampled by Google Search. Standard errors based on 1,000 bootstrap resamples are reported in parentheses. * $p < 0.10$, ** $p < 0.05$, *** $p < 0.01$.

**Table B4: The effect of the expulsion on news tone
(excluding opinion articles)**

	All		NYT	WP	WSJ
	(1)	(2)	(3)	(4)	(5)
T			-0.018*** (0.001)	-0.016*** (0.001)	-0.004*** (0.001)
Post			-0.005*** (0.002)	-0.005*** (0.002)	-0.005*** (0.002)
T × Post	0.005*** (0.002)	0.004** (0.002)	0.004** (0.002)	0.003* (0.002)	0.005*** (0.002)
Comparison	Bloomberg (g)	Bloomberg (g)	Bloomberg (g)	Bloomberg (g)	Bloomberg (g)
Controls		✓	✓	✓	✓
Year-month FEs	✓	✓			
News-outlet FEs	✓	✓			
Adjusted R ²	0.065	0.069	0.076	0.052	0.008
Observations	9563	9563	3271	3992	4870

Notes. g = Articles sampled by Google Search. Standard errors based on 1,000 bootstrap resamples are reported in parentheses. * $p < 0.10$, ** $p < 0.05$, *** $p < 0.01$.

**Table B5: The effect of the expulsion on news tone
(excluding articles containing the phrase “trade war”)**

	All		NYT	WP	WSJ
	(1)	(2)	(3)	(4)	(5)
T			-0.021*** (0.002)	-0.018*** (0.002)	-0.005*** (0.002)
Post			-0.005*** (0.002)	-0.005*** (0.002)	-0.005*** (0.002)
T × Post	0.006*** (0.002)	0.005*** (0.002)	0.006** (0.002)	0.004** (0.002)	0.005*** (0.002)
Comparison	Bloomberg (g)	Bloomberg (g)	Bloomberg (g)	Bloomberg (g)	Bloomberg (g)
Controls		✓	✓	✓	✓
Year-month FEs	✓	✓			
News-outlet FEs	✓	✓			
Adjusted R ²	0.074	0.078	0.085	0.063	0.010
Observations	8879	8879	2968	3815	4224

Notes. g = Articles sampled by Google Search. Standard errors based on 1,000 bootstrap resamples are reported in parentheses. * $p < 0.10$, ** $p < 0.05$, *** $p < 0.01$.

**Table B6: The effect of the expulsion on news tone
(excluding articles containing the word “trade”)**

	All		NYT	WP	WSJ
	(1)	(2)	(3)	(4)	(5)
T			-0.024*** (0.002)	-0.021*** (0.002)	-0.007*** (0.002)
Post			-0.005** (0.002)	-0.005** (0.002)	-0.004** (0.002)
T × Post	0.007*** (0.002)	0.006*** (0.002)	0.007*** (0.003)	0.005* (0.003)	0.007*** (0.002)
Comparison	Bloomberg (g)	Bloomberg (g)	Bloomberg (g)	Bloomberg (g)	Bloomberg (g)
Controls		✓	✓	✓	✓
Year-month FEs	✓	✓			
News-outlet FEs	✓	✓			
Adjusted R ²	0.079	0.081	0.103	0.073	0.019
Observations	5707	5707	1937	2540	2594

Notes. g = Articles sampled by Google Search. Standard errors based on 1,000 bootstrap resamples are reported in parentheses. * $p < 0.10$, ** $p < 0.05$, *** $p < 0.01$.

**Table B7: The effect of the expulsion on news tone
(post-March 17)**

	All		NYT	WP	WSJ
	(1)	(2)	(3)	(4)	(5)
T			-0.018*** (0.001)	-0.016*** (0.001)	-0.004*** (0.001)
Post	-0.005** (0.002)	-0.004* (0.002)	-0.005*** (0.001)	-0.005*** (0.002)	-0.004*** (0.002)
T × Post	0.005*** (0.002)	0.004*** (0.002)	0.004** (0.002)	0.003* (0.002)	0.006*** (0.002)
Comparison	Bloomberg (g)	Bloomberg (g)	Bloomberg (g)	Bloomberg (g)	Bloomberg (g)
Controls		✓	✓	✓	✓
Year-month FEs	✓	✓			
News-outlet FEs	✓	✓			
Adjusted R ²	0.068	0.072	0.069	0.056	0.008
Observations	10535	10535	3554	4681	4870

Notes. g = Articles sampled by Google Search. Standard errors based on 1,000 bootstrap resamples are reported in parentheses. * $p < 0.10$, ** $p < 0.05$, *** $p < 0.01$.

Table B8: *The effect of the expulsion on news tone (allowing news outlets to follow different time trends)*

	All	
	(1)	(2)
T × Post	0.011** (0.004)	0.011** (0.004)
Comparison	Bloomberg (g)	Bloomberg (g)
Controls		✓
News-outlet-year-month FEs	✓	✓
Adjusted R ²	0.070	0.074
Observations	10535	10535

Notes. g = Articles sampled by Google Search. Standard errors based on 1,000 bootstrap resamples are reported in parentheses. * $p < 0.10$, ** $p < 0.05$, *** $p < 0.01$.

**Table B9: The effect of the expulsion on news tone
(compared to China Daily, sentimentR)**

	All		NYT	WP	WSJ	Bloomberg (g)
	(1)	(2)	(3)	(4)	(5)	(6)
T			-0.196*** (0.007)	-0.197*** (0.007)	-0.164*** (0.006)	-0.143*** (0.008)
Post			-0.032*** (0.008)	-0.032*** (0.008)	-0.032*** (0.008)	-0.030*** (0.008)
T × Post	0.020** (0.008)	0.020** (0.008)	0.021** (0.009)	0.025*** (0.009)	0.023*** (0.009)	0.008 (0.010)
Comparison	China Daily (g)	China Daily (g)	China Daily (g)	China Daily (g)	China Daily (g)	China Daily (g)
Controls		✓	✓	✓	✓	✓
Year-month FEs	✓	✓				
News-outlet FEs	✓	✓				
Adjusted R ²	0.321	0.322	0.444	0.409	0.353	0.298
Observations	10276	10276	3295	4422	4611	2311

Notes. g = Articles sampled by Google Search. Standard errors based on 1,000 bootstrap resamples are reported in parentheses. * $p < 0.10$, ** $p < 0.05$, *** $p < 0.01$.

**Table B10: The effect of the expulsion on news tone
(compared to news tone on Russia and Iran)**

	All		NYT	WP	WSJ
	(1)	(2)	(3)	(4)	(5)
T			-0.007*** (0.002)	-0.006*** (0.002)	-0.004* (0.002)
Post			0.000 (0.003)	-0.000 (0.003)	0.000 (0.003)
China			0.013*** (0.003)	0.013*** (0.003)	0.016*** (0.003)
T × Post	-0.003 (0.003)	-0.004 (0.003)	-0.003 (0.003)	-0.005* (0.003)	0.001 (0.003)
T × China	-0.007*** (0.003)	-0.008*** (0.002)	-0.011*** (0.003)	-0.010*** (0.003)	-0.000 (0.003)
Post × China	-0.005 (0.003)	-0.004 (0.003)	-0.005* (0.003)	-0.005 (0.003)	-0.005 (0.003)
T × Post × China	0.007** (0.003)	0.007** (0.003)	0.006 (0.004)	0.007** (0.004)	0.004 (0.004)
Comparison	Bloomberg (g)	Bloomberg (g)	Bloomberg (g)	Bloomberg (g)	Bloomberg (g)
Controls		✓	✓	✓	✓
Year-month FEs	✓	✓			
News-outlet FEs	✓	✓			
Country FEs	✓	✓			
Adjusted R ²	0.100	0.115	0.095	0.107	0.079
Observations	18600	18600	6008	9311	6871

Notes. g = Articles sampled by Google Search. Standard errors based on 1,000 bootstrap resamples are reported in parentheses. * $p < 0.10$, ** $p < 0.05$, *** $p < 0.01$.