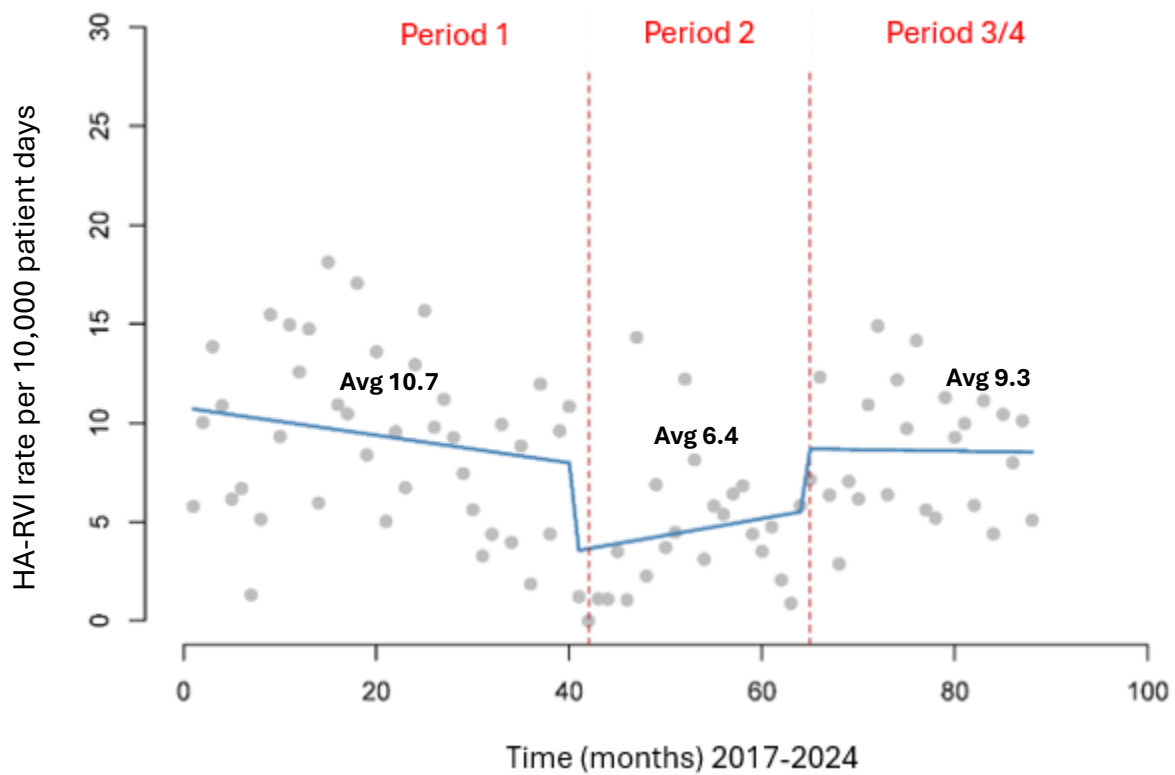
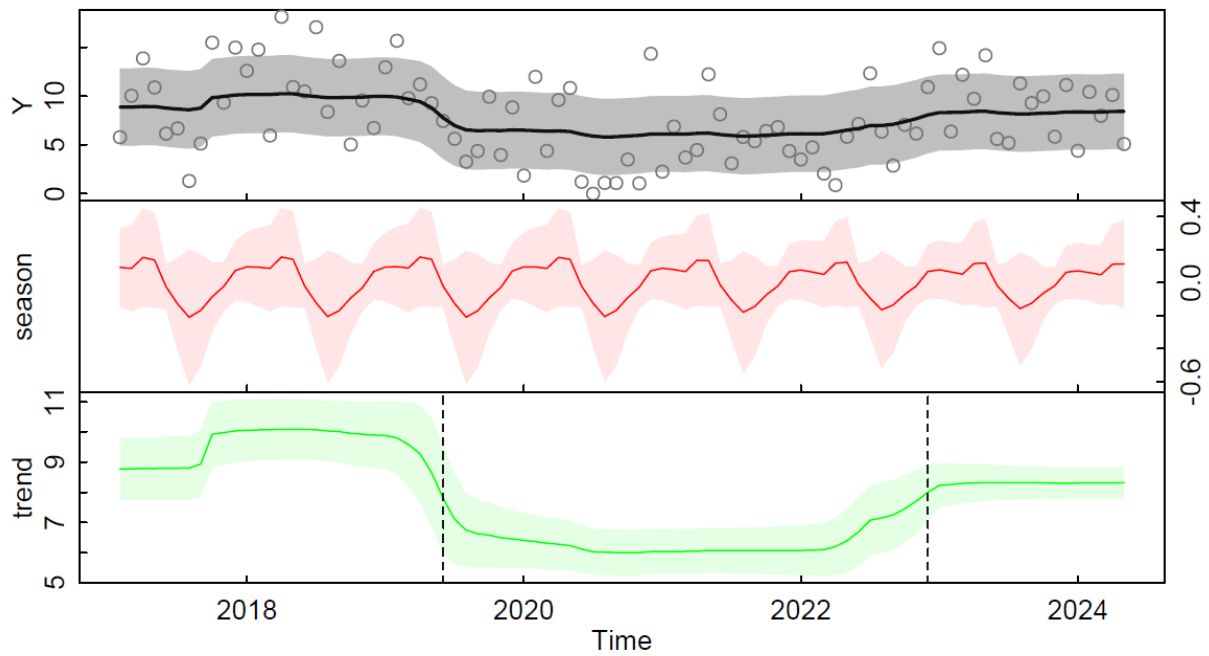


## Supplement 1. Interrupted time series



Interrupted time series with change points at Period 1 and Period 3/4 as identified in change point analysis (supplemental 2 below). On average, the HA-RVI rate decreased 4.3 ( $p < 0.02$ ) from Period 1 to Period 2. From Period 2 to Period 3/4 on average the rate increased by 2.9 ( $p = 0.16$ ). From Period 1 to Period 3/4 the rate decreased by -1.4 ( $p = 0.53$ ).

## Supplement 2. Change point analysis



Top figure shows actual curve, second curve shows seasonality, third figure shows trend equal to the actual minus seasonality. Dashed vertical lines show predicted change points. There were two changepoints identified with coverage area within the regions of interest.