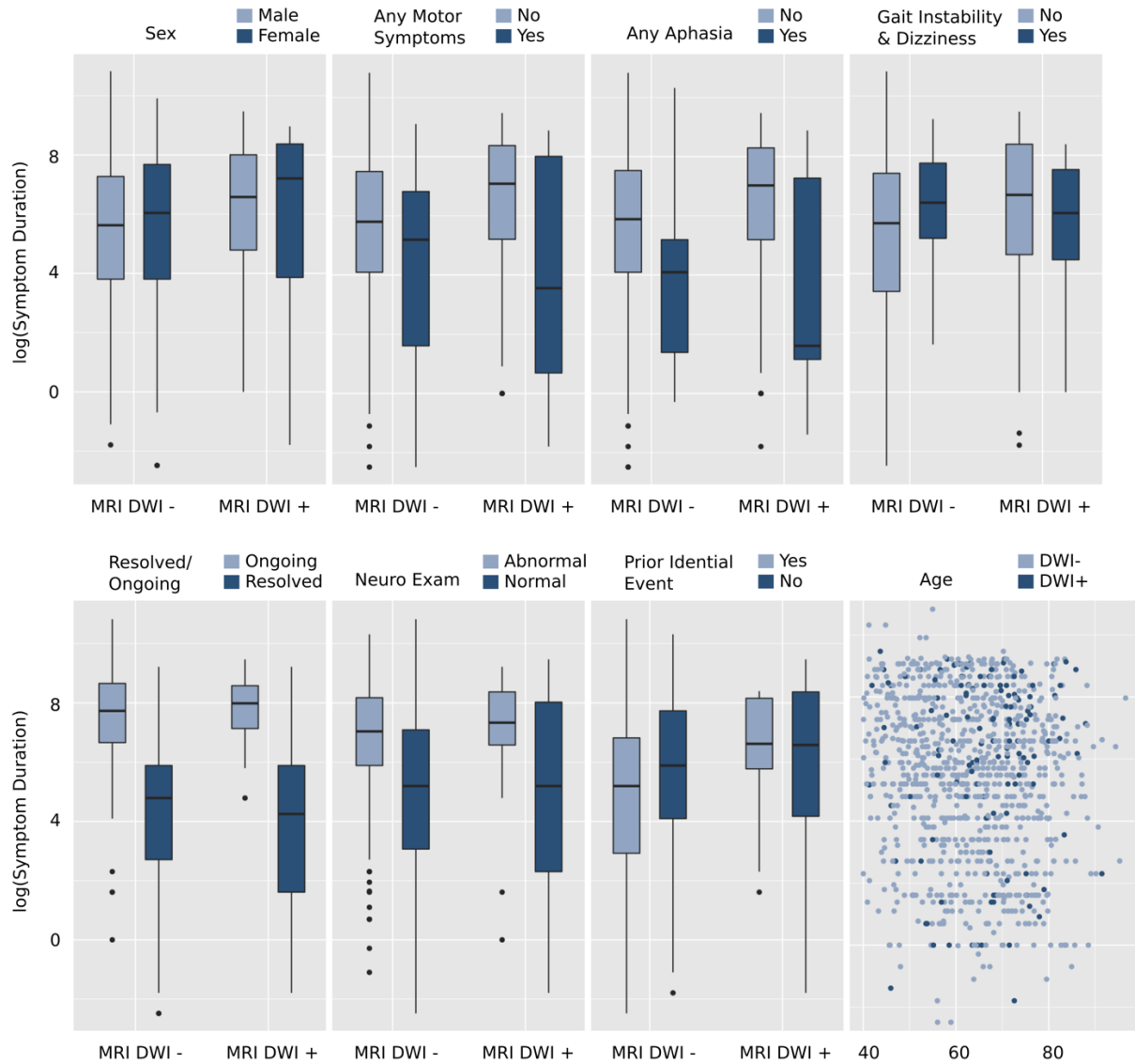


## **SUPPLEMENT**

### **Clinical Predictors of Acute Ischemia in Patients with Low-Risk Neurological Deficits**

Martha Marko, MD, Francois Moreau, MD, Jean-Martin Boulanger MD,  
Marie-Christine Camden MD, Bruce C.V. Campbell PhD, Thalia S. Field MD MHSc, Martin  
Krause MD, Robert Mikulik MD, Andrew M. Penn MD, Richard H. Swartz MD,  
Michael D. Hill MD MSc, Shelagh B. Coutts, MD

## Supplemental Figure



**Supplemental Figure S1** Symptom duration for patient subgroups stratified by MRI-DWI-positivity

Boxplots showing median values (horizontal line) and corresponding interquartile ranges (box) for categorical variables, the continuous variable age is illustrated using a scatterplot. For readability, logarithmic values are provided for symptom duration. Subgroups were selected based on relevant variables in the final logistic regression model. The y-axis provides the logarithmic values for the overall symptom duration. For categorical variables, subgroups are further divided into patients with positive and negative DWI-MRI on the x-axis and into patients with or without the presence of the defined subgroup-characteristic illustrated by the color-code provided on top of each panel. For the continuous variable age, the x-axis indicates increasing age, whereas MRI-DWI positivity or negativity is color-coded. MRI indicates Magnetic Resonance Imaging, DWI Diffusion Weighted Imaging.

## Supplemental Tables

**Supplemental Table S1:** Patient characteristics stratified per symptom subgroup (irrespective of symptom combinations)

	<b>Any Motor</b>	<b>Any Sensory</b>	<b>Vision loss</b>	<b>Pos. Vision</b>	<b>Diplopia</b>	<b>Limb ataxia</b>	<b>Gait instability</b>	<b>Dizziness</b>	<b>Aphasia</b>	<b>Dysarthria</b>	<b>Confusion*</b>	<b>Altered LOC</b>
n (% of study population)	116 (11.3)	595 (57.9)	117 (11.4)	56 (5.5)	72 (7.0)	42 (4.1)	307 (29.9)	327 (31.8)	66 (6.4)	73 (7.1)	53 (5.2)	11 (1.1)
Age, years, median (IQR)	56.7 (49.1-70.2)	60.2 (52.3-69.1)	61.2 (50.8-69.7)	60.4 (49.1-67.5)	66.7 (58.3-73.7)	57.5 (48.5-72.0)	68.1 (58.9-74.6)	65.8 (56.3-73.2)	64.8 (55.7-73.5)	57.7 (50.7-66.6)	60.3 (53.4-68.8)	66.3 (55.6-73.6)
Female sex, n (%)	61 (52.6)	318 (53.5)	61 (52.1)	37 (66.1)	36 (50.0)	29 (69.1)	145 (47.2)	165 (50.5)	36 (54.6)	33 (45.2)	25 (47.2)	5 (45.5)
Symptoms ongoing, n (%)	32 (27.6)	229 (38.5)	38 (32.5)	14 (25.0)	34 (47.2)	26 (61.9)	130 (42.4)	127 (38.8)	6 (9.1)	15 (20.6)	11 (20.8)	4 (36.4)
Symptom duration, min mean (IQR)	32.5 (3.5-270)	180 (15-600)	90 (20-300)	60 (20-180)	120 (45-300)	180 (10-720)	170 (45-360)	180 (40-360)	17.5 (3-165)	15 (4-180)	90 (10-500)	15 (5-35)
Neuro exam normal, n (%)	96 (82.8)	436 (73.3)	89 (76.1)	49 (87.5)	33 (45.8)	25 (59.5)	177 (57.7)	205 (62.7)	62 (93.9)	63 (80.8)	45 (84.9)	7 (63.6)
No prior identical event, n (%)	97 (83.6)	456 (76.6)	89 (76.1)	44 (78.6)	59 (81.9)	33 (78.6)	233 (75.9)	252 (77.1)	55 (83.3)	59 (86.3)	45 (84.9)	10 (90.9)
DWI-positive, n (%)	25 (21.6)	88 (14.8)	13 (11.1)	1 (1.8)	11 (15.3)	11 (26.2)	40 (13.0)	32 (9.8)	15 (22.7)	12 (16.4)	8 (15.1)	2 (18.0)

IQR indicates Interquartile Range, DWI Diffusion-Weighted-Imaging

**Supplemental Table S2:** Frequencies of symptoms irrespective of any symptom combinations and corresponding frequencies of DWI-positivity, ordered by highest to lowest rate of DWI-positivity within groups

<b>Symptom</b>	<b>N (% of total study population)</b>	<b>DWI-positive, n (%)</b>
Limb ataxia	42 (4.1)	11 (26.2)
Aphasia	66 (6.4)	15 (22.7)
Any motor symptoms	116 (11.3)	25 (21.6)
Altered level of consciousness	11 (1.1)	2 (18.0)
Dysarthria	73 (7.1)	12 (16.4)
Diplopia	72 (7.0)	11 (15.3)
Confusion	53 (5.2)	8 (15.1)
Any sensory	595 (57.9)	88 (14.8)
Gait instability	307 (29.9%)	40 (13.0)
Vision loss	307 (11.4)	13 (11.1)
Dizziness	327 (31.8)	32 (9.8)
Positive vision	56 (5.4)	1 (1.8)

DWI indicates Diffusion-Weighted Imaging

**Supplemental Table S3:** Frequencies of symptom pairs and corresponding frequencies of DWI-positivity, ordered by highest to lowest rate of DWI-positivity within groups

<b>Symptom pair</b>	<b>N (% of total study population)</b>	<b>DWI-positive, n (%)</b>
Diplopia – Confusion	1 (0.1)	1 (100)
Dizziness – Confusion	1 (0.1)	1 (100)
Gait instability – Altered LOC	2 (0.2)	1 (50.0)
Any sensory – Limb ataxia	10 (1.0)	4 (40.0)
Limb ataxia – Gait instability	5 (0.5)	2 (40.0)
Any motor – Aphasia	3 (0.3)	1 (33.3)
Aphasia – Dysarthria	3 (0.3)	1 (33.3)
Diplopia – Gait instability	10 (1.0)	3 (30.0)
Any motor – Dysarthria	4 (0.4)	1 (25.0)
Any sensory – Confusion	8 (0.8)	2 (25.0)
Vision loss – Gait instability	4 (0.4)	1 (25.0)
Any sensory – Dysarthria	13 (1.3)	3 (23.1)
Any sensory – Aphasia	9 (0.9)	2 (22.2)
Any motor – Any sensory	53 (5.2)	11 (20.8)
Vision loss – Positive vision	6 (0.6)	1 (16.7)
Any sensory – Dizziness	42 (4.1)	6 (14.3)
Diplopia – Dizziness	9 (0.9)	1 (11.1)
Any sensory – Vision loss	23 (2.2)	2 (8.7)
Gait instability – Dizziness	117 (11.4)	8 (6.8)
Any sensory – Gait instability	16 (1.6)	1 (6.2)
Any motor – Limb ataxia	1 (0.1)	0 (0)
Any motor – Gait instability	1 (0.1)	0 (0)
Any motor – Dizziness	1 (0.1)	0 (0)
Any motor – Confusion	1 (0.1)	0 (0)
Any sensory – Positive vision	8 (0.8)	0 (0)
Any sensory – Diplopia	5 (0.5)	0 (0)
Any sensory – Altered LOC	1 (0.1)	0 (0)
Vision loss – Diplopia	1 (0.1)	0 (0)
Vision loss – Dizziness	8 (0.8)	0 (0)
Vision loss – Aphasia	3 (0.3)	0 (0)
Vision loss – Dysarthria	2 (0.2)	0 (0)
Positive vision – Diplopia	1 (0.1)	0 (0)

Positive vision – Gait instability	1 (0.1)	0 (0)
Positive vision – Dizziness	2 (0.2)	0 (0)
Positive vision – Aphasia	4 (0.4)	0 (0)
Positive vision – Dysarthria	1 (0.1)	0 (0)
Positive vision – Confusion	3 (0.3)	0 (0)
Limb ataxia – Dysarthria	1 (0.1)	0 (0)
Gait instability – Aphasia	1 (0.1)	0 (0)
Gait instability – Dysarthria	1 (0.1)	0 (0)
Dizziness – Dysarthria	5 (0.5)	0 (0)
Aphasia – Confusion	1 (0.1)	0 (0)
Dysarthria – Confusion	2 (0.2)	0 (0)
Confusion – Altered LOC	2 (0.2)	0 (0)

---

DWI indicates Diffusion-Weighted Imaging, LOC Level of Consciousness

**Supplemental Table S4:** Frequencies of symptom triplets and corresponding frequencies of DWI-positivity, ordered by highest to lowest rate of DWI-positivity within groups

<b>Symptom triplet</b>	<b>N (% of total study population)</b>	<b>DWI-positive, n (%)</b>
Any motor – Aphasia – Dysarthria	3 (0.3)	3 (100)
Any motor – Any sensory – Aphasia	4 (0.4)	2 (50.0)
Gait instability – Dizziness – Dysarthria	2 (0.2)	1 (50.0)
Any sensory – Limb ataxia – Gait instability	6 (0.6)	2 (33.3)
Diplopia – Gait instability – Dizziness	18 (1.8)	4 (22.2)
Any sensory – Gait instability - Dizziness	22 (2.1)	3 (13.6)
Any sensory – Vision loss – Positive vision	9 (0.9)	0 (0)
Any motor – Any sensory – Dysarthria	5 (0.5)	0 (0)
Any motor – Any sensory – Vision loss	4 (0.4)	0 (0)
Any motor – Any sensory – Dizziness	4 (0.4)	0 (0)
Vision loss – Gait instability - Dizziness	4 (0.4)	0 (0)
Any sensory – Vision loss – Gait instability	3 (0.3)	0 (0)
Any sensory – Diplopia - Dizziness	3 (0.3)	0 (0)
Any sensory – Dizziness - Confusion	3 (0.3)	0 (0)
Any motor – Any sensory – Gait instability	2 (0.2)	0 (0)
Any motor – Gait instability – Dizziness	2 (0.2)	0 (0)
Any sensory – Vision loss - Dysarthria	2 (0.2)	0 (0)
Any sensory – Vision loss - Confusion	2 (0.2)	0 (0)
Any sensory – Positive vision - Dizziness	2 (0.2)	0 (0)
Any sensory – Limb ataxia – Dizziness	2 (0.2)	0 (0)
Any sensory – Gait instability – Dysarthria	2 (0.2)	0 (0)
Vision loss – Positive vision – Dizziness	2 (0.2)	0 (0)
Positive vision – Gait instability – Dizziness	2 (0.2)	0 (0)
Limb ataxia – Gait instability – Dizziness	2 (0.2)	0 (0)
Gait instability – Dizziness – Aphasia	2 (0.2)	0 (0)
Gait instability – Dizziness – Altered LOC	2 (0.2)	0 (0)

Limited to triplets with >1 observation

LOC indicates Level of consciousness

**Supplemental Table S5:** Sensitivity analysis in the subgroup of patients with resolved symptoms at the time of presentation (n=758)

Multivariable analysis – Association of clinical findings with MRI-DWI-positivity

	<b>Odds Ratio</b>	<b>95%CI</b>
Age (years)	1.02	0.99 – 1.04
Female sex	0.55	0.32 – 0.94
Any motor symptoms	2.82	1.44 – 5.33
Aphasia	2.70	1.28 – 5.42
Gait instability/dizziness	0.99	0.33 – 2.46
Normal neurological exam	0.73	0.36 – 1.59
No previous identical event	2.72	1.28 – 6.73
Symptom duration (min)	1.00	0.99 – 1.00

MRI indicates Magnetic Resonance Imaging, DWI Diffusion-Weighted Imaging, CI Confidence Interval

**Supplemental Table S6:** Sensitivity analysis in the subgroup of patients without any motor or speech symptoms (n=810)

Multivariable analysis – Association of clinical findings with MRI-DWI-positivity

	<b>Odds Ratio</b>	<b>95%CI</b>
Age (years)	1.03	1.01 – 1.05
Female sex	0.32	0.19 – 0.50
Limb ataxia	2.06	0.63 – 5.68
Any sensory symptom/limb ataxia	3.19	0.53 – 18.88
Normal neurological exam	0.59	0.36 – 1.59
Resolved symptoms	0.46	0.28 – 0.76
No previous identical event	1.80	1.03 – 3.31

MRI indicates Magnetic Resonance Imaging, DWI Diffusion-Weighted Imaging, CI Confidence Interval