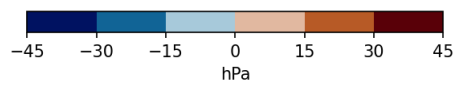
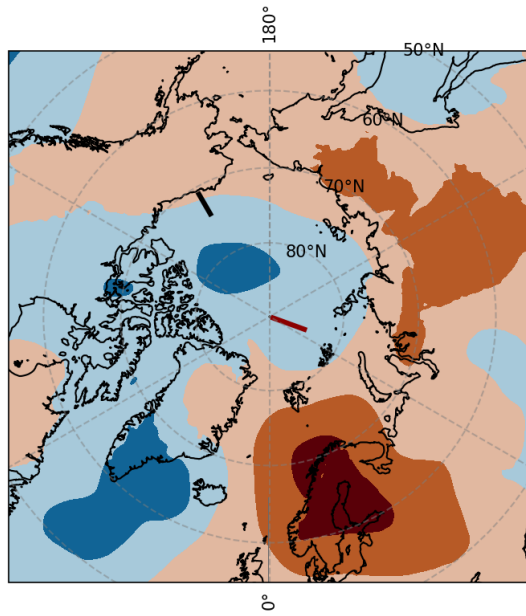
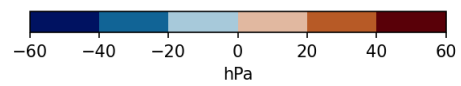
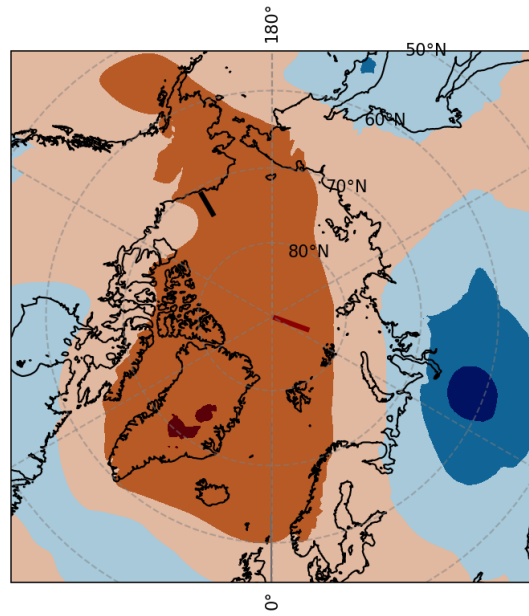


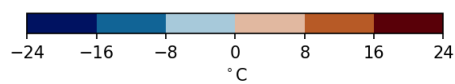
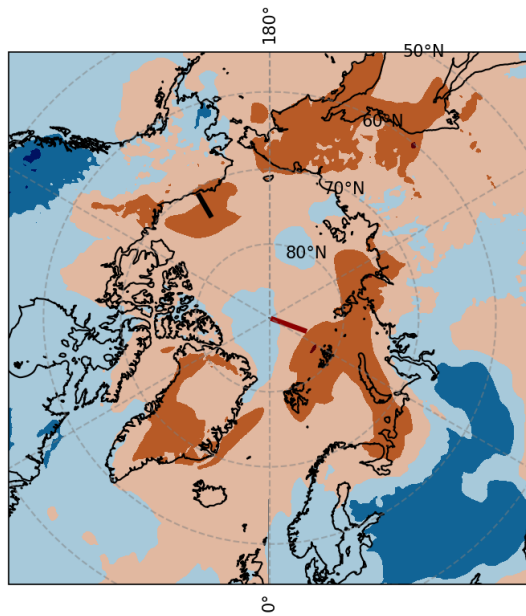
a) Mean Sea Level Pressure anomaly, 07.02.2017



b) Mean Sea Level Pressure anomaly, 07.02.2021



c) Temperature 2m anomaly, 07.02.2017



d) Temperature 2m anomaly, 07.02.2021

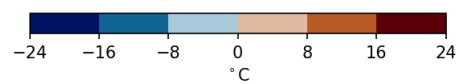
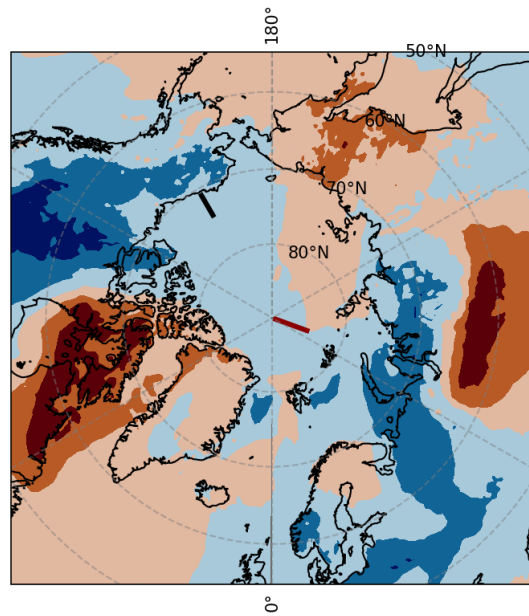
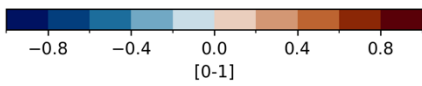
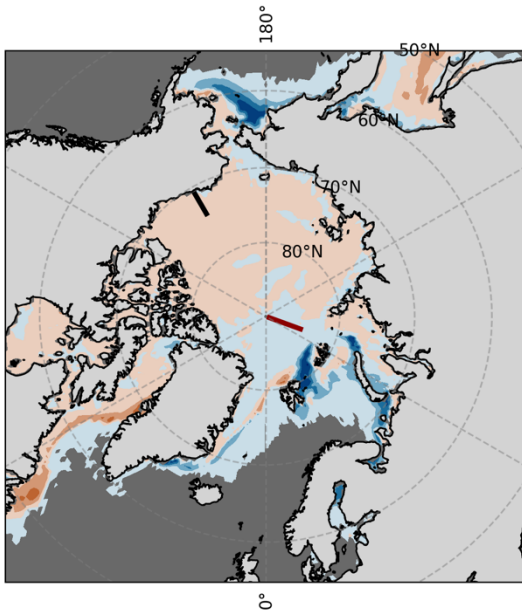
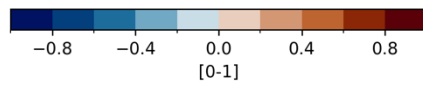
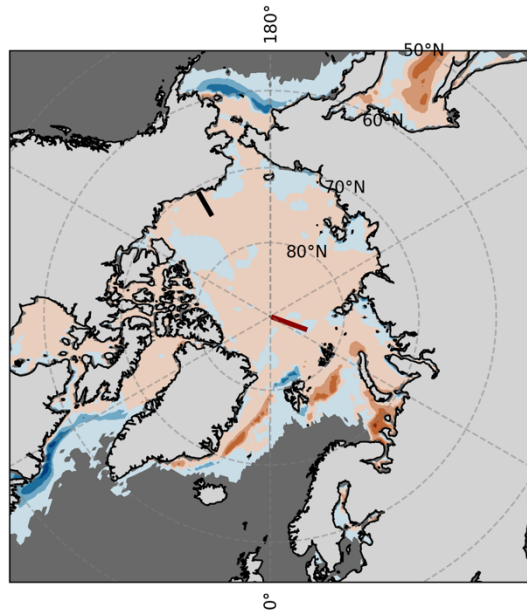


Figure 1: Anomalies of the mean sea level pressure and 2 m temperature on the first day of the 07.02.2017 and 07.02.2021 forecasts. The anomalies are calculated with respect to the 2002-2021 average conditions on the day in question.

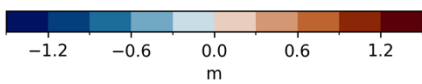
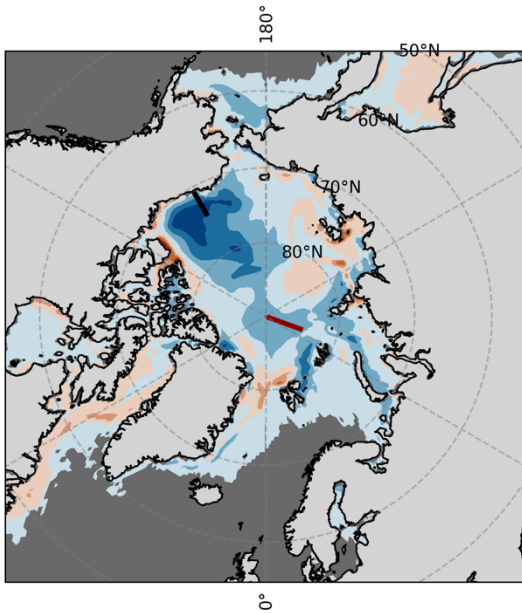
a) Sea Ice Concentration anomaly, 07.02.2017



b) Sea Ice Concentration anomaly, 07.02.2021



c) Sea Ice Thickness anomaly, 07.02.2017



d) Sea Ice Thickness anomaly, 07.02.2021

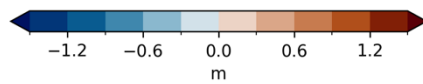
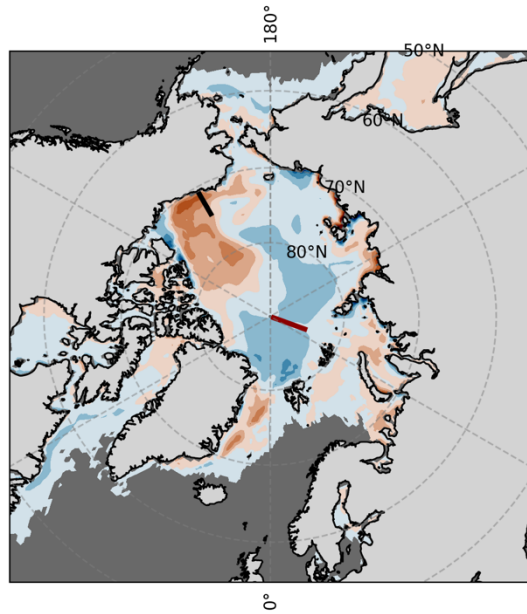


Figure 2 Anomalies of the sea ice concentration and thickness on the first day of the 07.02.2017 and 07.02.2021 forecasts. The anomalies are calculated with respect to the 2002-2021 average conditions on the day in question.