

# Whey protein dynamics in goat mammary secretions during colostrum and early lactation periods

Raquel FS Raimondo, Samantha Miyashiro and Eduardo H Birgel Junior

## SUPPLEMENTARY FILE

Figure S1. Electropherogram of the whey proteins of Saanen goats during the colostrum phase and the milk, obtained by dodecyl sulfate-polyacrylamide gel electrophoresis (12% SDS-PAGE). G–proteins with molecular weight between 132 and 244 kDa; A–lactoferrin; B–serum albumin; C–heavy chain immunoglobulin; H- proteins with molecular weight between 30 and 50 kDa; D– light chain immunoglobulin; E -  $\beta$ -lactoglobulin; F –  $\alpha$ -lactalbumin.

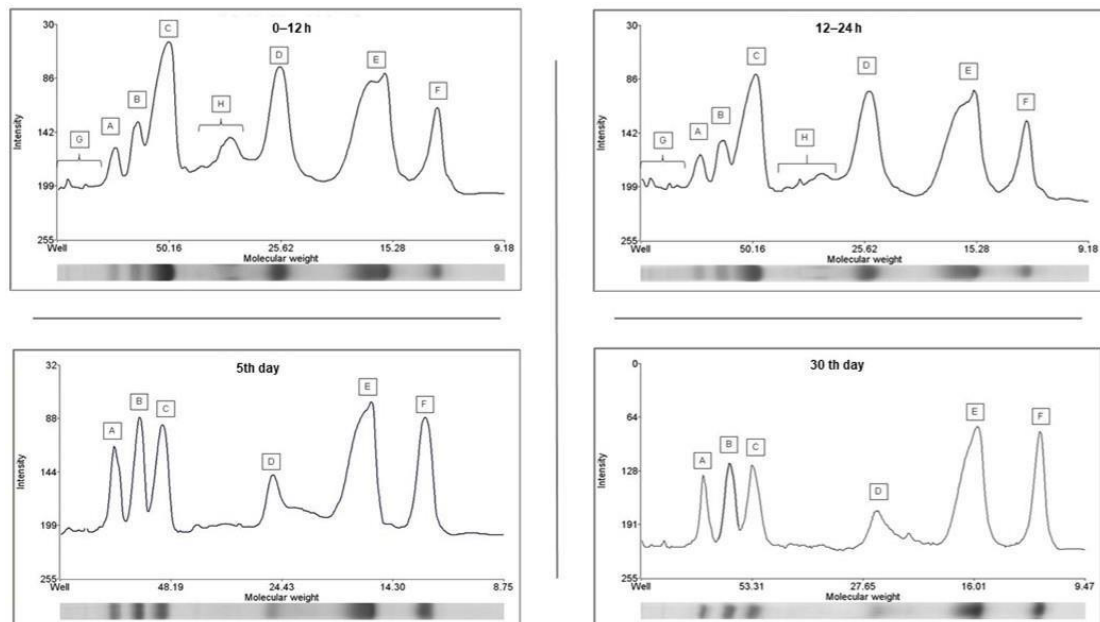


Figure S2 Concentration (%) of the molecular weight between 132 and 244 kDa; lactoferrin; serum albumin; heavy chain immunoglobulin; proteins with molecular weight between 30 and 50 kDa; light chain immunoglobulin;  $\beta$ -lactoglobulin;  $\alpha$ -lactalbumin. of Saanen goats in relation to the whey protein during the first month of lactation, obtained by polyacrylamide gel electrophoresis (SDS-PAGE 12%).

