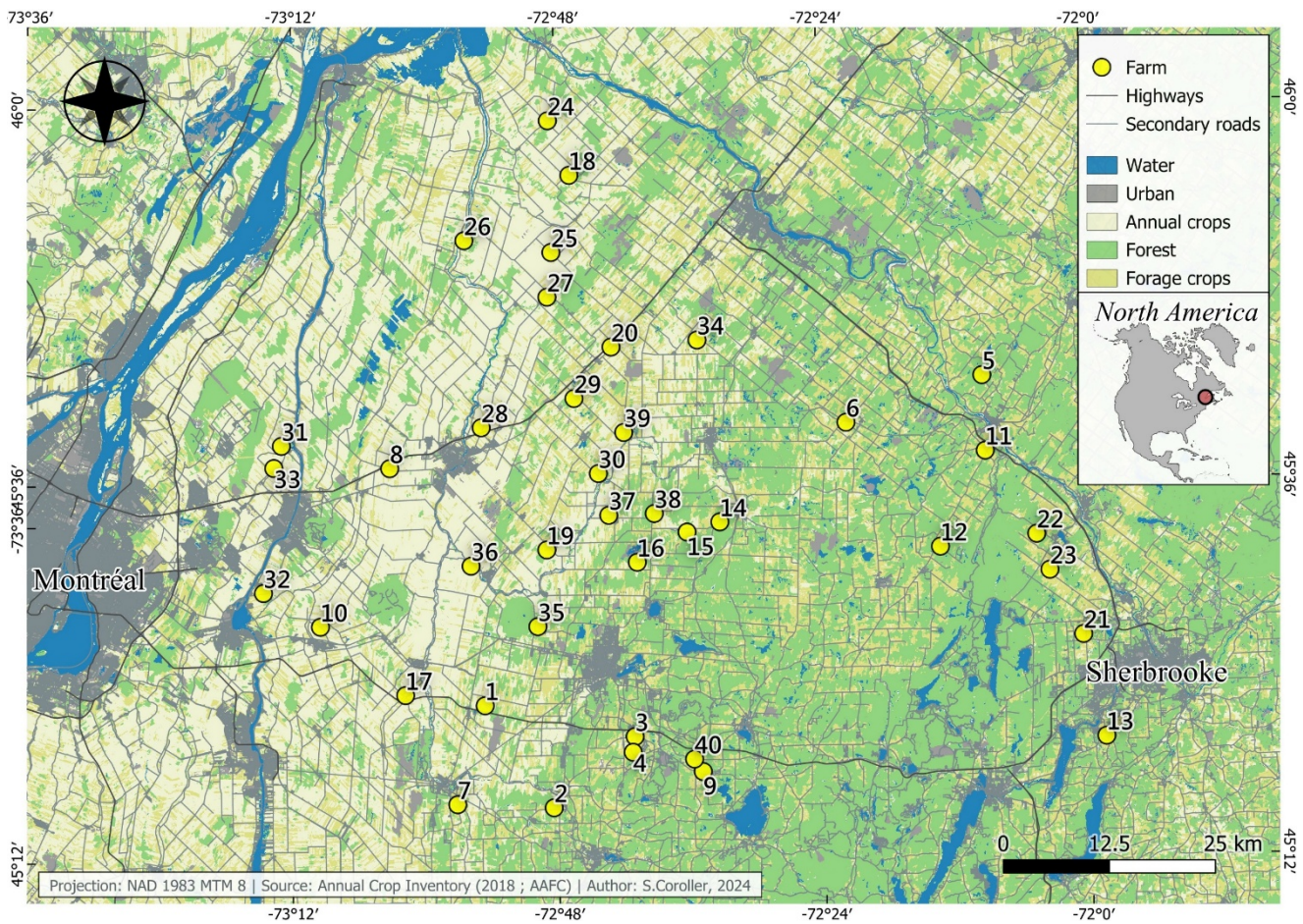


15 Supplementary material, File S1 – study area

16 As mentioned in the section, Study system and field sampling, we collected
17 *Protocalliphora* spp. puparia within a network of 400 nest boxes distributed equally among 40
18 farms located along a 10 200-km² gradient of agricultural intensity in southern Quebec, Canada.
19 This area spans a vast region composed of farmlands that vary strikingly in both their landscape
20 composition and configuration due to agricultural intensity, as can be seen in Figure S1.



21 **Figure S1.** Geographic distribution of the 40 farms monitored across a 10 200-km² gradient of
22 agricultural intensity in southern Quebec, Canada. Map coordinates are shown in latitude and
23 longitude (degrees; WGS 84, EPSG:4326). Spatial data were projected in the NAD83 MTM
24 Zone 8 system for mapping and spatial analyses.

25