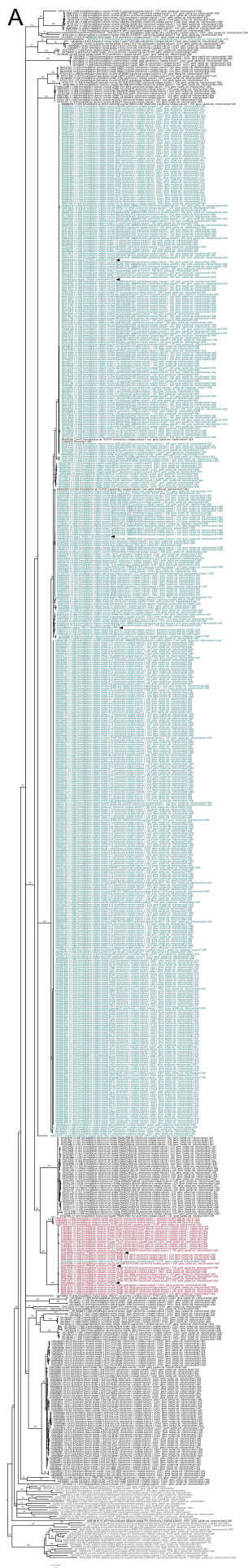


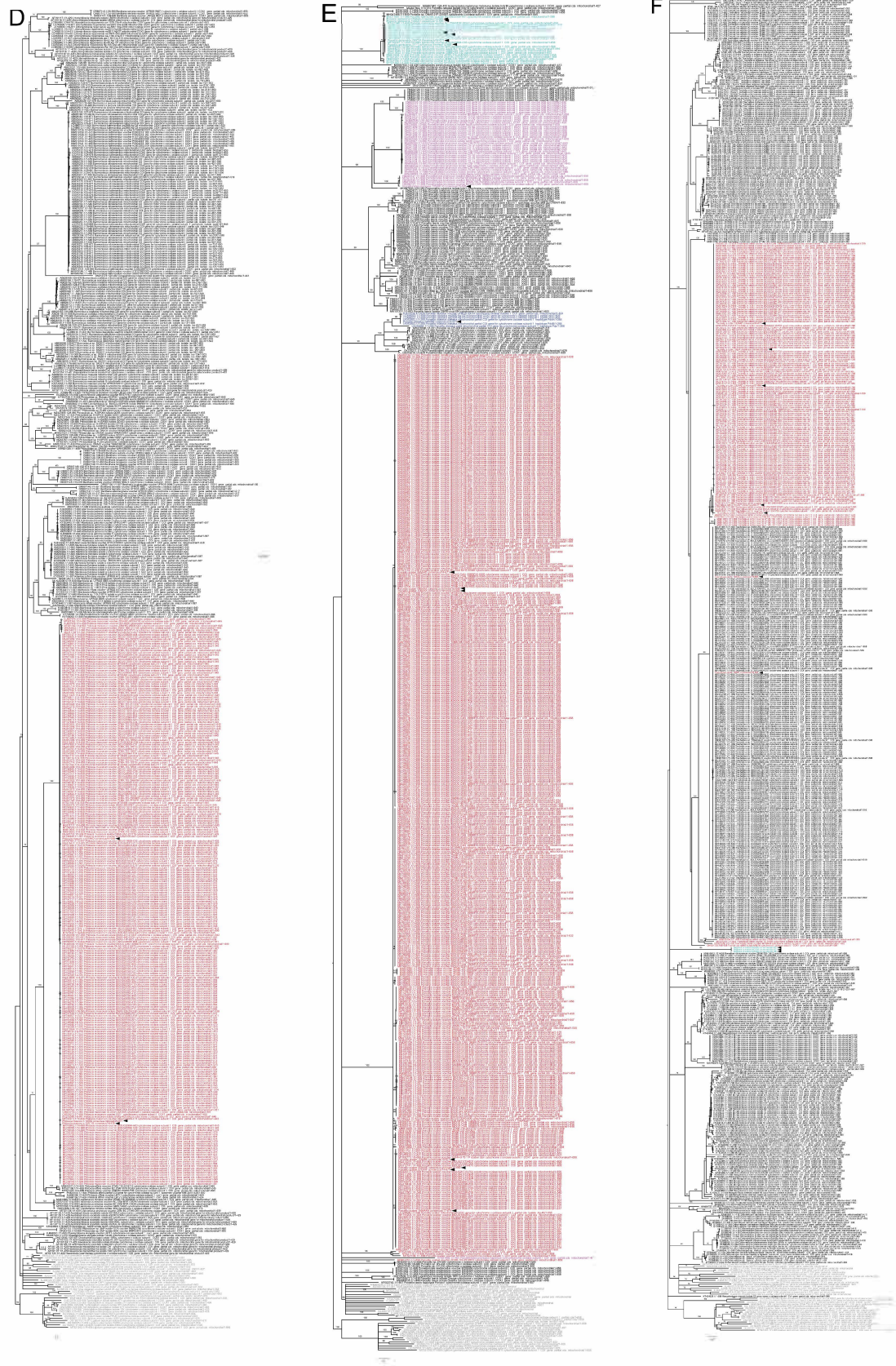
Stormer, H.G., Pike, E.M., Sperling, F.A.H., Proctor, H.C. 2025.
Distribution and diversity of terrestrial isopods (Isopoda: Oniscidea) in
Canada, including new records and a species checklist. The Canadian
Entomologist.

Supplementary material, Fig. S3

Figure S8 (7 plates). Maximum-likelihood phylogenies of seven terrestrial isopod families built with CO1 barcode sequences. Black arrows indicate sequences obtained in this study. Outgroup clades (Tylidae and Ligiidae, excluding *Ligia*) are coloured grey; clades belonging to a species that had at least one CO1 barcode produced in this study are coloured by species. Numbers above nodes show ultrafast bootstrap support. Nodes with < 70% ultrafast bootstrap support are collapsed. In the phylogeny for Trachelipodidae, *Nagurus cristatus* sequences form a polytomy with Trachelipodidae and Tylidae. Please note that the inclusion of GenBank sequences in each family reflects the GenBank taxonomic classification of these genera, and may not be in accordance with currently-accepted taxonomy. **A**, Armadillidiidae; **B**, Cylisticidae; **C**, Oniscidae; **D**, Philosciidae; **E**, Porcellionidae; **F**, Trachelipodidae; **G**, Trichoniscidae.







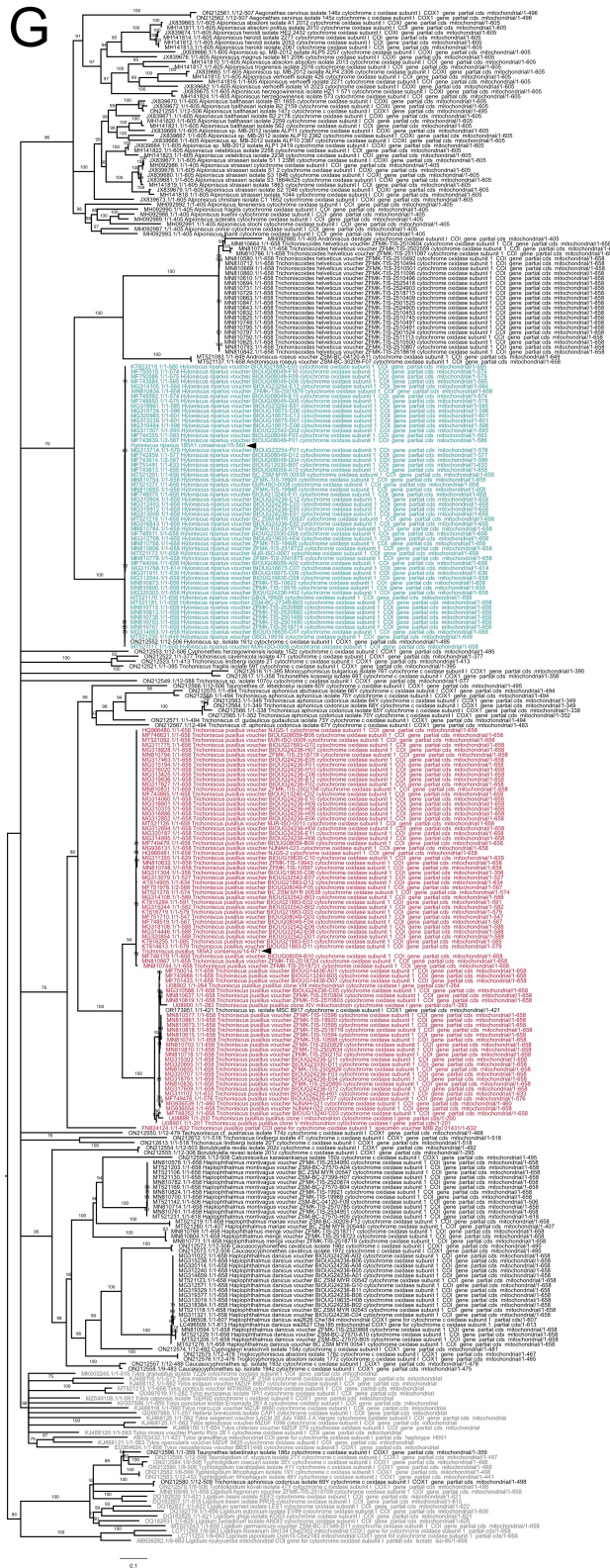


Figure S3 (7 plates). Maximum-likelihood phylogenies of seven terrestrial isopod families built with CO1 barcode sequences. Black arrows indicate sequences obtained in this study. Outgroup clades (Tylidae and Ligiidae, excluding *Ligia*) are coloured grey; clades belonging to a species that had at least one CO1 barcode produced in this study are coloured by species. Numbers above nodes show ultrafast bootstrap support. Nodes with < 70% ultrafast bootstrap support are collapsed. In the phylogeny for Trachelipodidae, *Nagurus cristatus* sequences form a polytomy with Trachelipodidae and Tylidae. Please note that the inclusion of GenBank sequences in each family reflects the GenBank taxonomic classification of these genera, and may not be in accordance with currently-accepted taxonomy. **A**, Armadillidiidae; **B**, Cylisticidae; **C**, Oniscidae; **D**, Philosciidae; **E**, Porcellionidae; **F**, Trachelipodidae; **G**, Trichoniscidae.