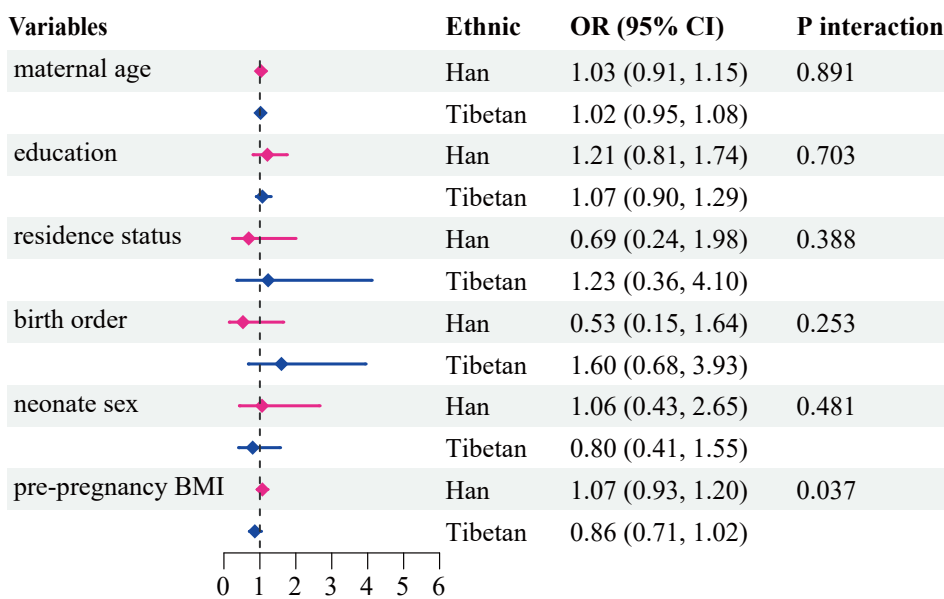


A. Model 1



B. Model 2

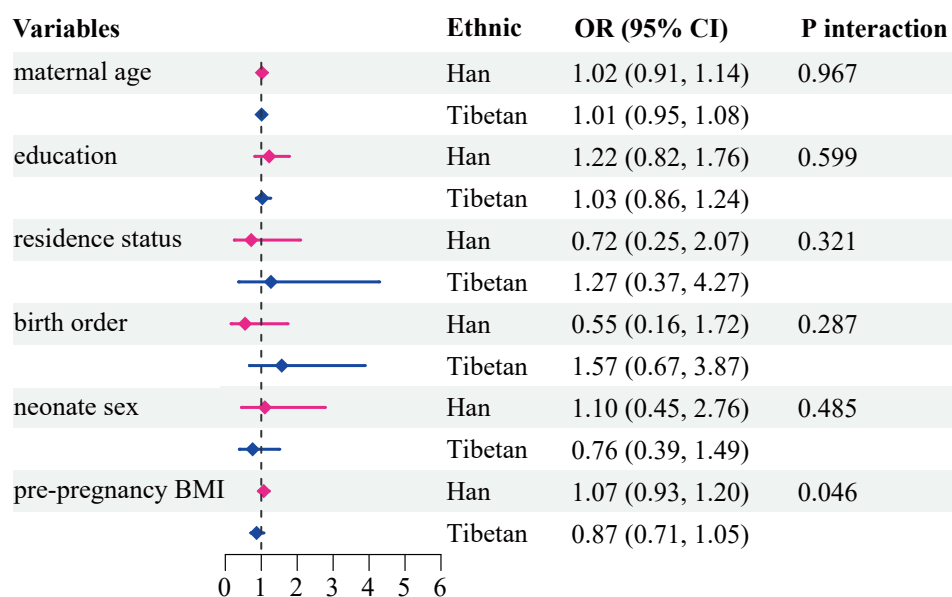


Figure S2. Association of the demographic variables with neonatal obesity by race.

The model 1 was adjusted by 14 food frequency measures and 6 variables residence (rural vs. urban), age at enrollment, year of education, pre-pregnancy BMI, first birth (yes/no), race (Tibetan vs. Han), and neonatal sex (male vs. female). The Model 2 was constructed by removing the most influential variable “fruit consumption” in Model 1.