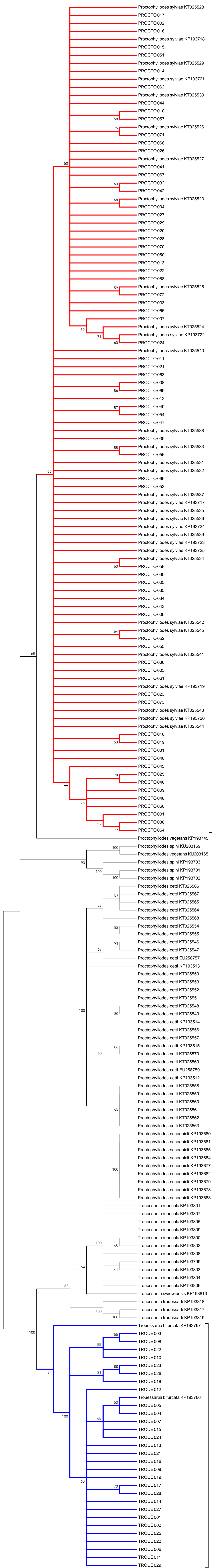
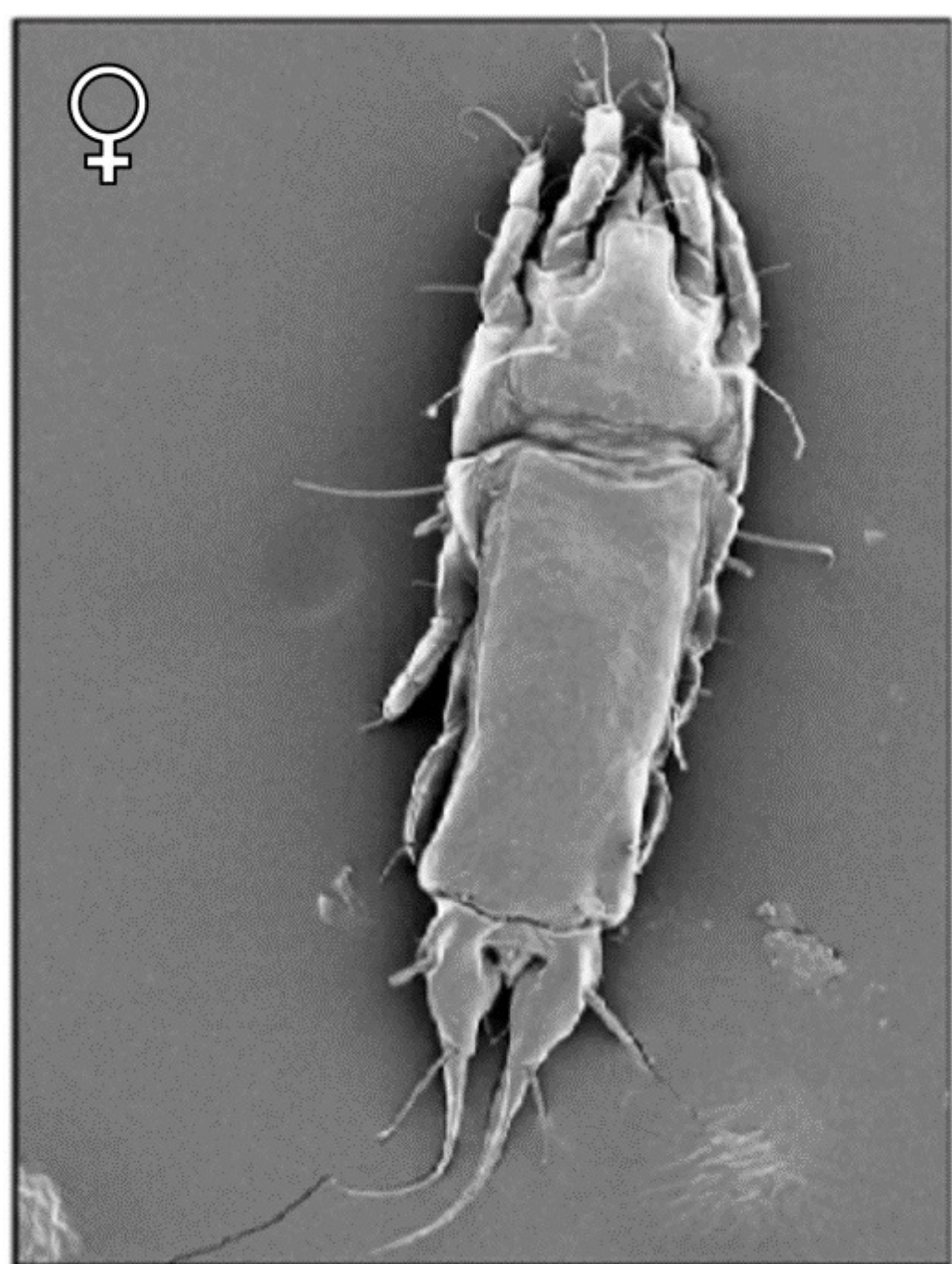


**Figure S1. Assessment of specific identity of the sampled mites.** Consensus bootstrap tree with cut-off value 50% of 196 haplotypes of 9 morphospecies of feather mite of the genera *Proctophyllodes* and *Trouessartia*, run to confirm the specific assignation of our samples. Numbers on branches represent % branch support as calculated by 1,000 bootstrap replications. The clades including ours as well as previously available sequences of the two mite species under study are marked in red (*P. sylviae*) and blue (*T. bifurcata*). © Images: the authors.





*Proctophyllodes sylviae*



*Trouessartia bifurcata*

