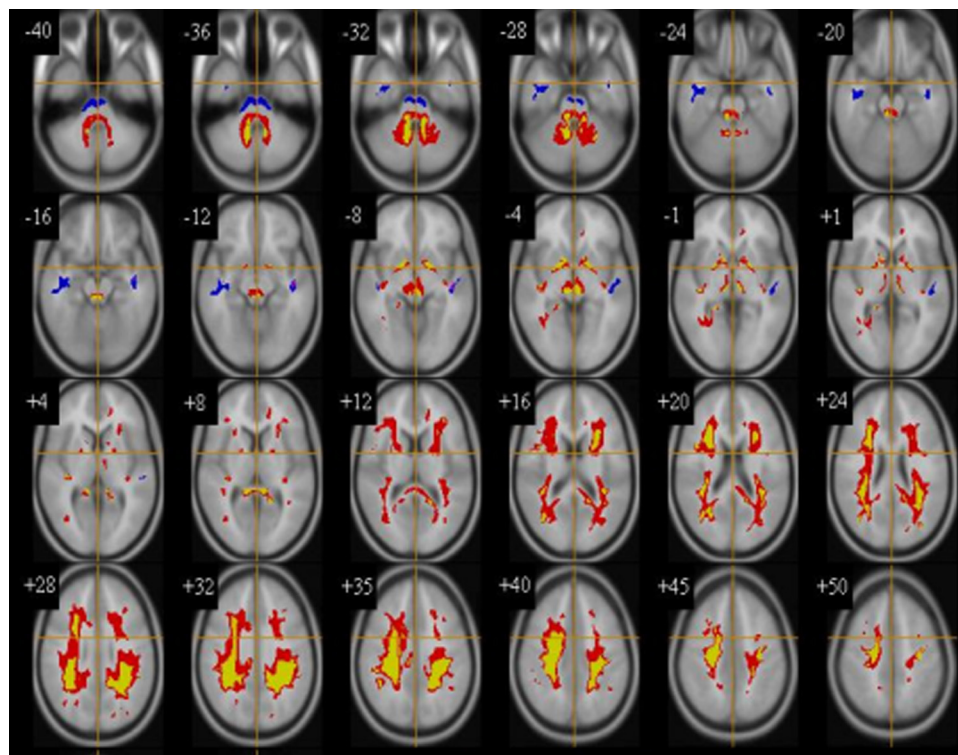


**Fig. DS1** Voxel-based morphometry of areas of grey-matter volume significantly decreased ( $P \leq 0.002$ ) in women with autistic-spectrum disorder compared with a control group.



**Fig. DS2** Voxel-based morphometry of areas of white-matter volume significantly decreased (blue) and increased (red/yellow) ( $P \leq 0.01$ ) in women with autistic-spectrum disorder compared with controls.